

'GSMJ' & 'GSMK' Ultra Fast Acting HRC Fuse Links

11/2

Specification and List Numbers

Type 'GSMJ' & Type 'GSMK' 32-1200 Amp

Ultra fast acting fuse links, rated 32 - 1200 Amp.

A.C. rating: 'GSMJ' - 800 Volt rms tested to 880 Volt rms.

'GSMK' - 1000 Volt rms tested to 1100 Volt rms.

D.C. rating: 'GSMJ' - 500 Volt d.c. time constant 20ms.

'GSMK' - 700 Volt d.c. time constant 20ms.

Voltage Rating		Current Rating	List Number	Minimum Pre-Arcing I ² t	Total I ² t	Cut-Off Current	Power Dissipation		Top Cap Temp. Rise	Dimensional Reference
Volt a.c. RMS	Volt d.c. @ 20ms	Amp		A ² sec	@ 100kA* A ² sec	@ 100kA* kA	@ In	@ 0.5 in	@ 20°C ambient °C	(Page 1/42)
ASTA Certified 800 also tested to 880	500	63	GSMJ63	450	8,500	5.8	16	3.0	65	11
		120	GSMJ120	1,800	32,400	9.0	28	5.5	65	12
		180	GSMJ180	4,200	66,600	11.3	43	9.0	68	13
		240	GSMJ240	7,500	110,000	13.0	56	11.0	68	14
		300	GSMJ300	12,000	165,000	15.6	68	13.5	96	15
		350	GSMJ350	17,400	230,000	17.2	80	16.0	84	16
		400	GSMJ400	24,000	304,000	19.4	91	18.0	99	
		460	GSMJ460	32,000	384,000	21.0	105	21.0	89	
		520	GSMJ520	40,900	478,000	22.5	117	23.0	76	17
		580	GSMJ580	51,000	675,000	24.0	137	27.0	92	
		630	GSMJ630	61,700	690,000	25.6	145	29.0	84	
		680	GSMJ680	74,900	806,000	27.4	155	31.0	104	
		800	GSMJ800	138,000	1,408,000	33.3	157	31.5	90	
		1000	GSMJ1000	220,000	2,080,000	39.0	195	38.0	80	18
1200	GSMJ1200	314,000	2,880,000	43.5	233	46.0	110			
ASTA Certified 1000 also tested to 1100	700	32	GSMK32	57	800	2.7	11	2.0	52	
		45	GSMK45	180	2,540	4.0	15	3.0	61	11
		63	GSMK63	450	6,200	5.4	22	4.2	79	
		120	GSMK120	1,800	24,000	8.2	39	7.5	67	12
		180	GSMK180	4,200	49,000	10.4	58	11.5	72	13
		240	GSMK240	7,500	81,600	12.8	77	14.0	83	14
		300	GSMK300	12,000	120,000	14.7	95	19.0	90	15
		350	GSMK350	17,400	166,000	16.6	111	22.0	91	16
		400	GSMK400	24,000	223,000	18.0	127	24.0	90	
		460	GSMK460	32,000	285,000	20.0	145	28.0	120	
		520	GSMK520	40,900	348,000	21.3	164	32.0	95	17
		580	GSMK580	51,000	425,000	22.8	187	36.0	96	
		630	GSMK630	61,700	508,000	23.8	198	40.0	98	
		680	GSMK680	74,900	590,000	25.7	213	42.0	115	
800	GSMK800	138,000	1,024,000	30.3	215	43.0	105			
1000	GSMK1000	220,000	1,520,000	36.2	255	48.0	93	18		
1200	GSMK1200	314,000	2,091,000	40.0	300	54.0	110			

* GSMJ at 800 Volt RMS
GSMK at 1000 Volt RMS

Note: Add-on indicator fuse link conversion kits are not available for this range of fuse links.
For indicated versions order as GSMJ/--- or GSMK/---.

Characteristics

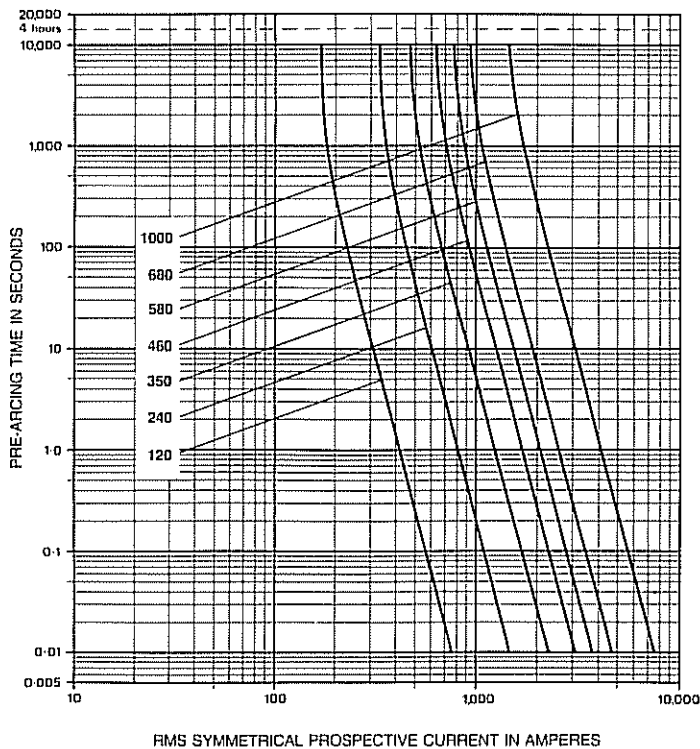
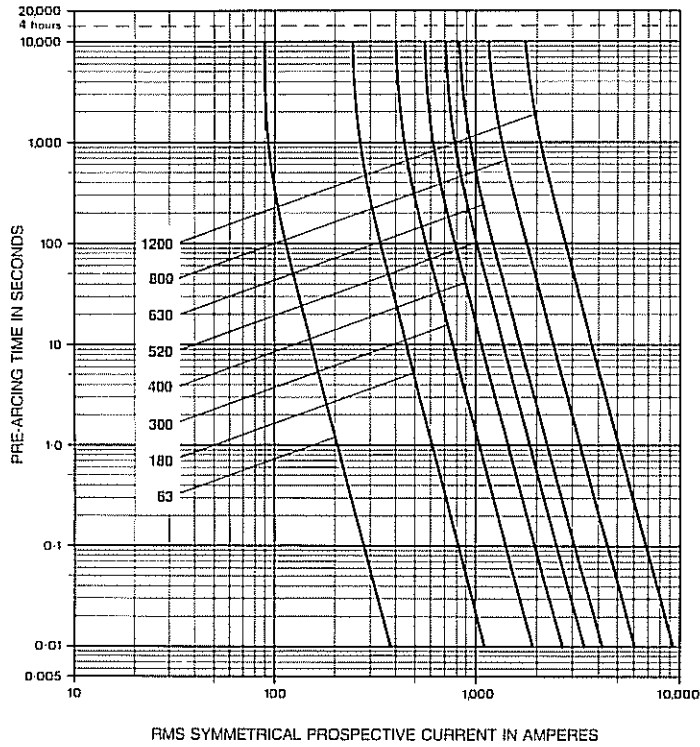
Type 'GSMJ'

Time/Current Characteristics

63-1200 Amp

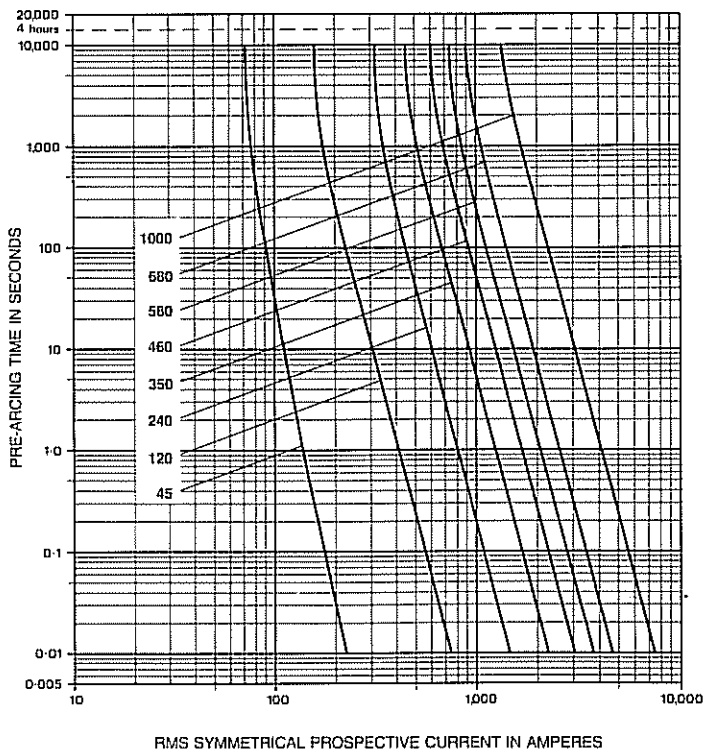
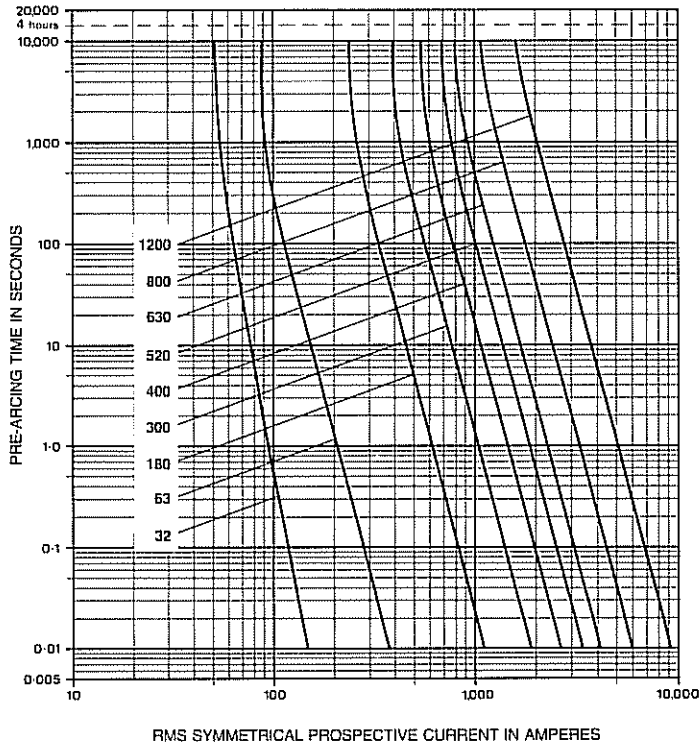
To aid references, characteristics feature alternate ratings.

1/30



Type 'GSMK'
Time/Current Characteristics
32-1200 Amp

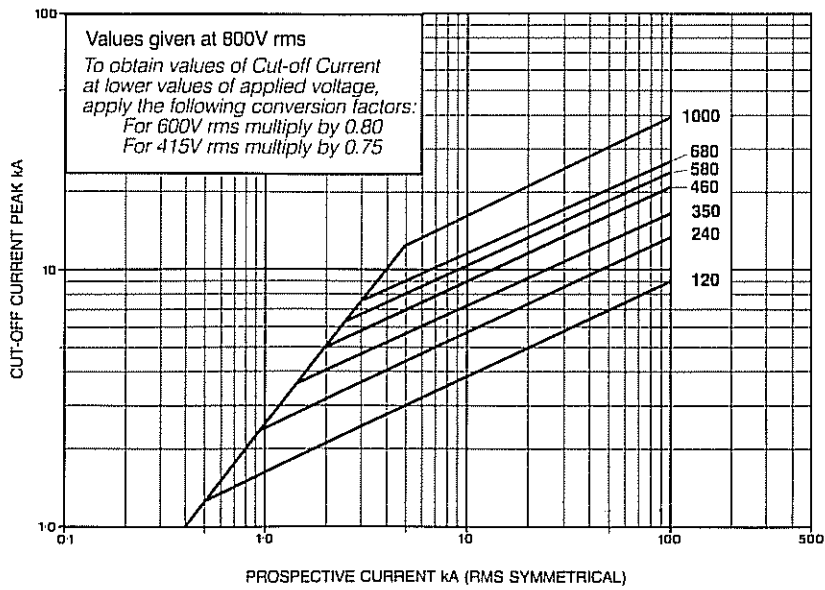
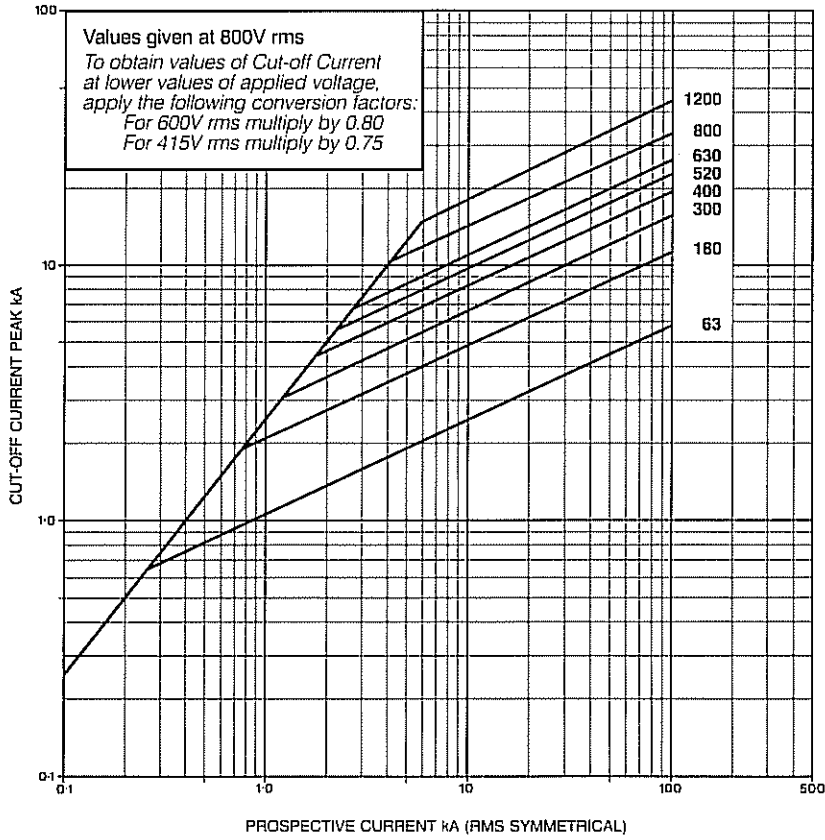
To aid references, characteristics feature alternate ratings.



Type 'GSMJ'
Cut-off Current Characteristics
63-1200 Amp

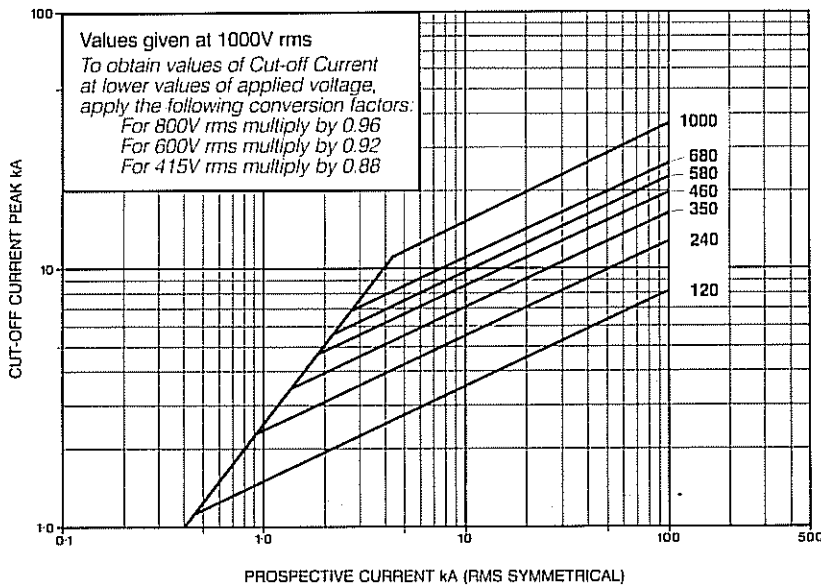
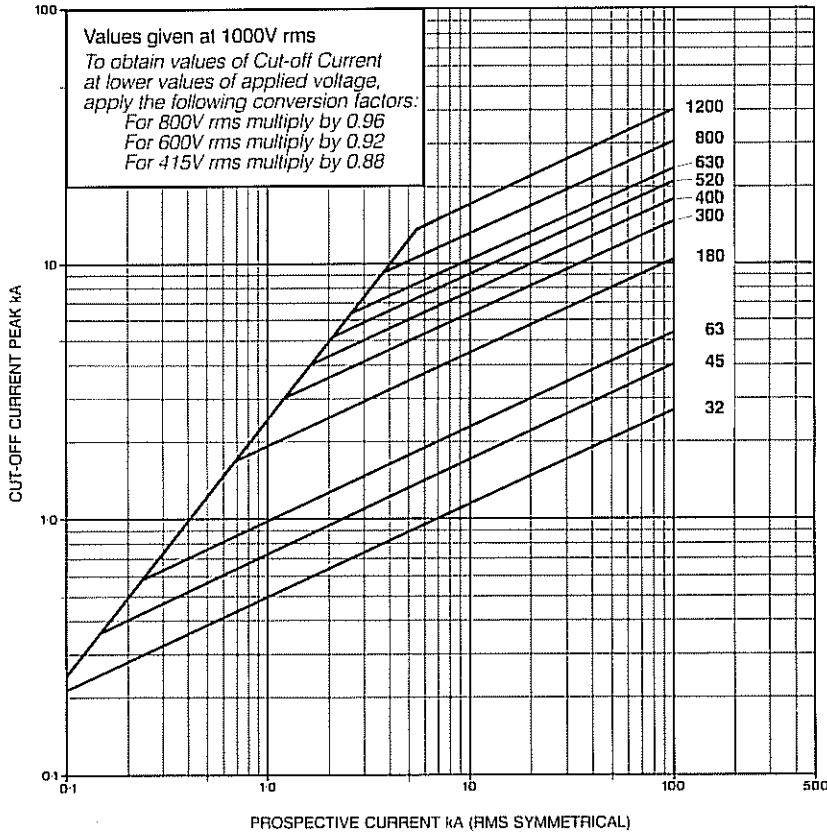
To aid references, characteristics feature alternate ratings.

TV/32



Type 'GSMK'
Cut-off Current Characteristics
32-1200 Amp

To aid references, characteristics of ratings above 120 Amp alternate between the tables.

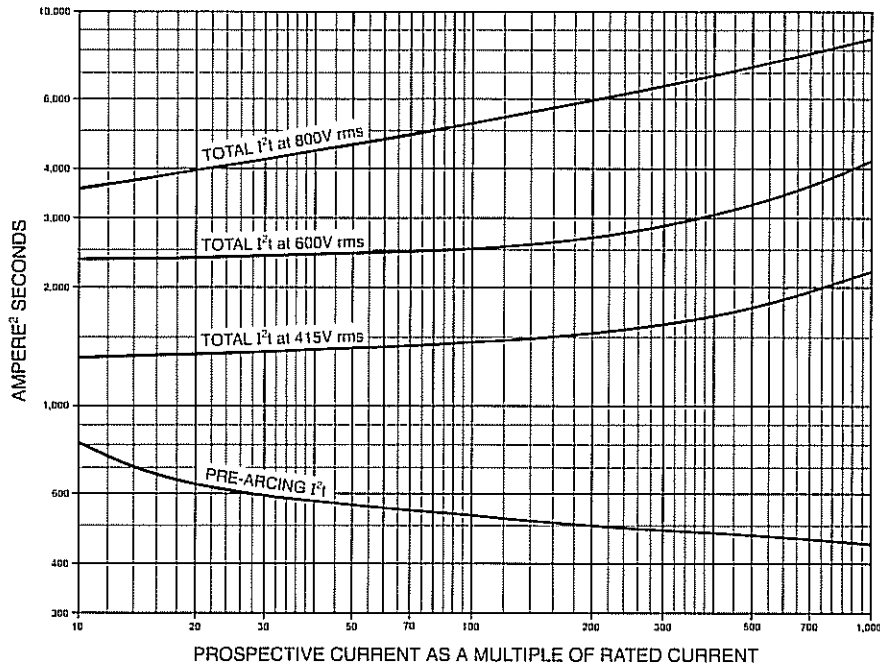


Type 'GSMJ'

I^2t variations with prospective current



Tested at 0.2 power factor.
 (For circuits of power factor ≥ 0.4 Total I^2t values are reduced by 20%).



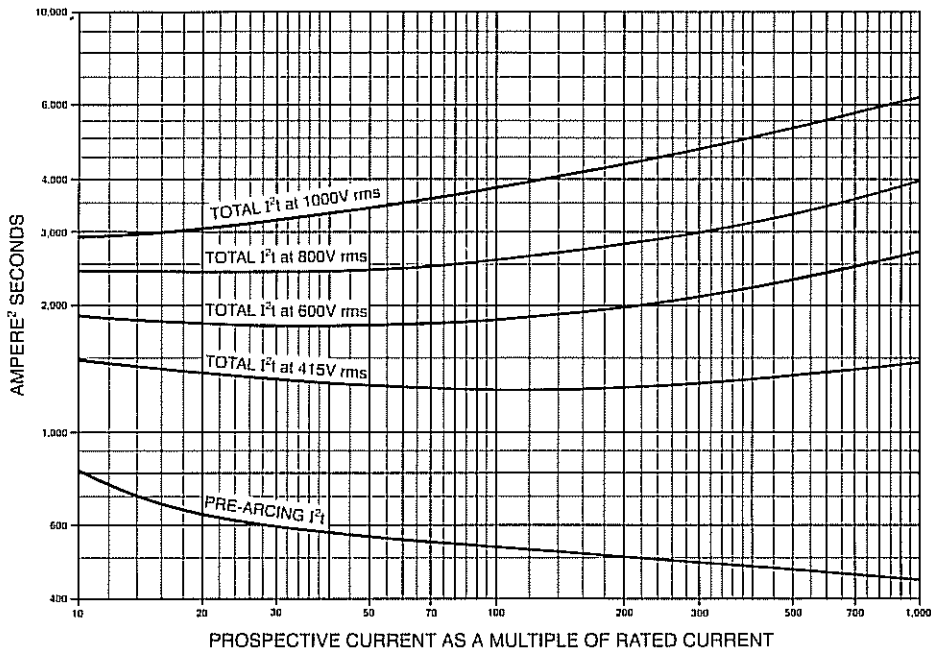
Pre-arcing I^2t or Total I^2t of given fuse link rating is obtained by reading off value on appropriate curve and multiplying by Factor 'A' from Table below.

Fuse Link Rating Amp	63	120	180	240	300	350	400	460	520	580	630	680	800	1000	1200
Factor 'A'	1	4	9	16	25	36	49	64	81	100	121	144	256	400	576

Type 'GSMK'

I^2t variations with prospective current

Tested at 0.2 power factor.
 (For circuits of power factor ≥ 0.4 Total I^2t values are reduced by 20%).

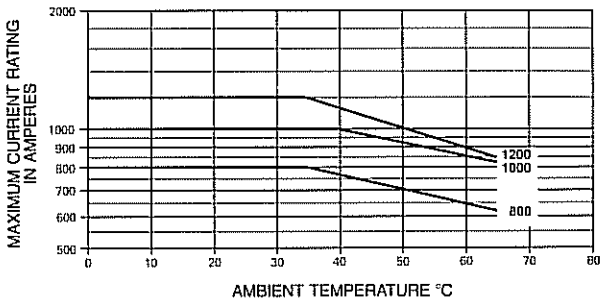


Pre-arcing I^2t or Total I^2t of given fuse link rating is obtained by reading off value on appropriate curve and multiplying by Factor 'A' from Table below.

Fuse Link Rating Amp	32	45	63	120	180	240	300	350	400	460	520	580	630	680	800	1000	1200
Factor 'A'	0.13	0.41	1	4	9	16	25	36	49	64	81	100	121	144	256	400	576

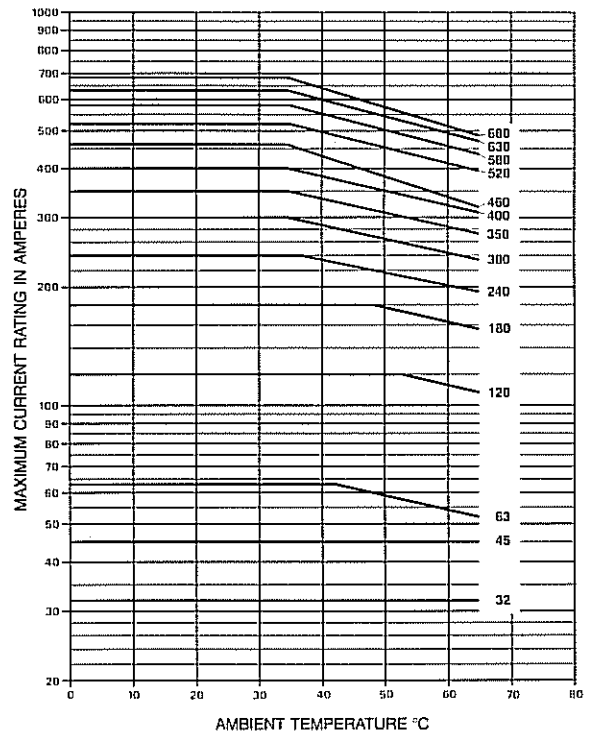
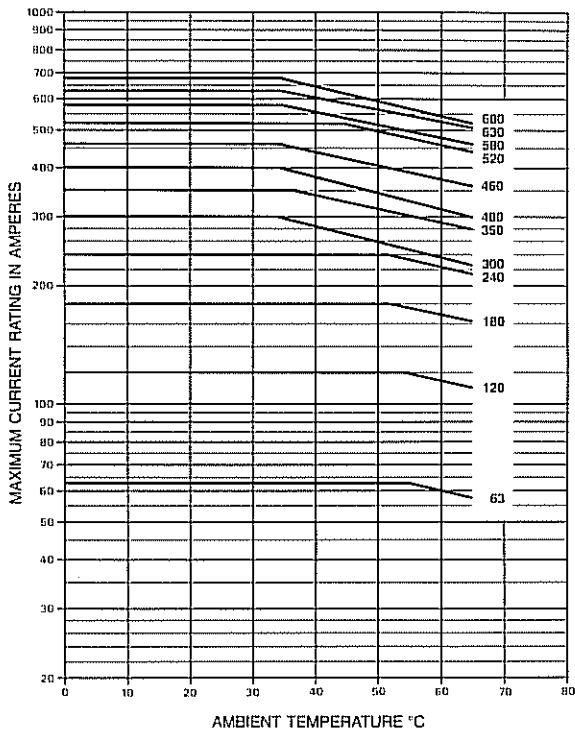
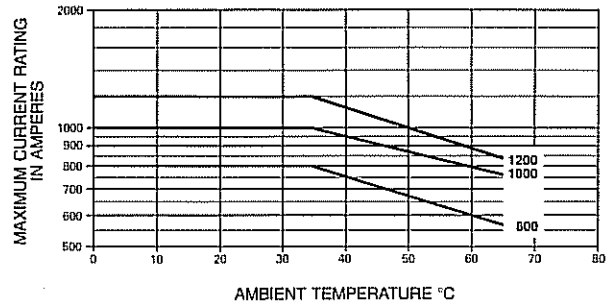
Type 'GSMJ'

De-rating at high ambients

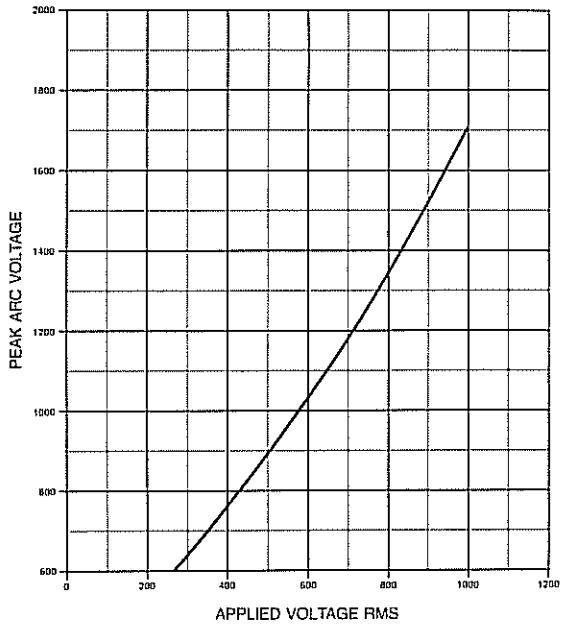


Type 'GSMK'

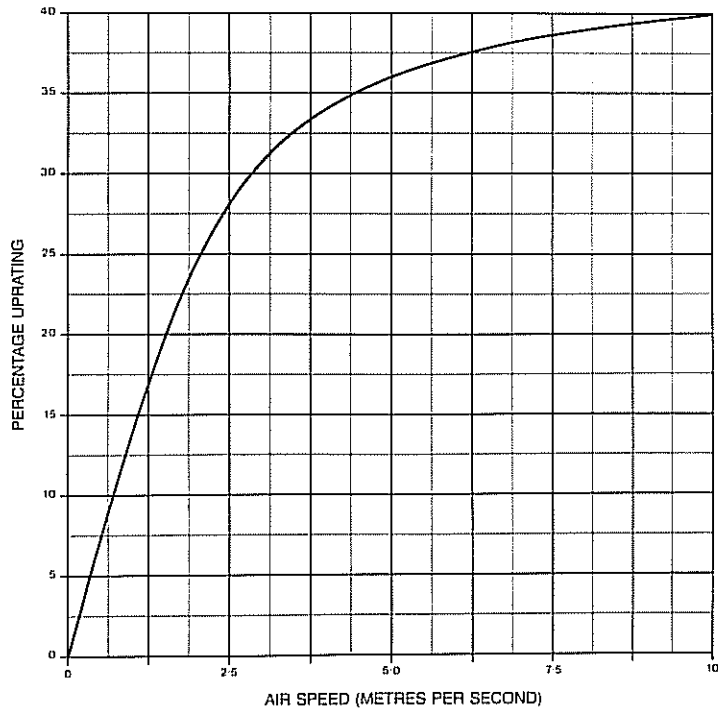
De-rating at high ambients



Type 'GSMJ' & 'GSMK'
Variation of arc voltage with
applied voltage



Type 'GSMJ' & 'GSMK'
Forced air cooling
up-rating curve



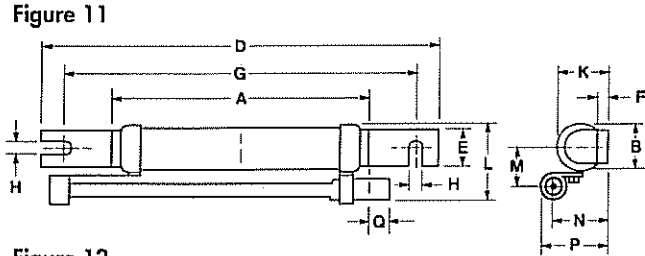


Figure 11

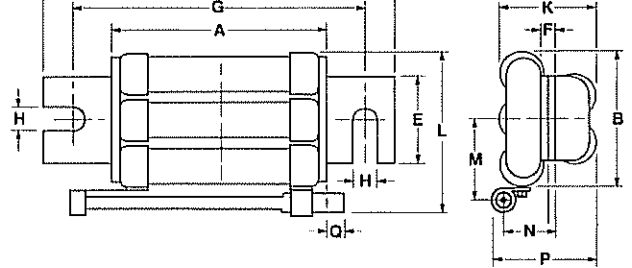


Figure 12

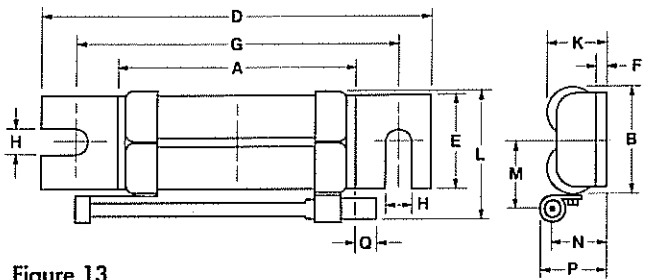


Figure 13

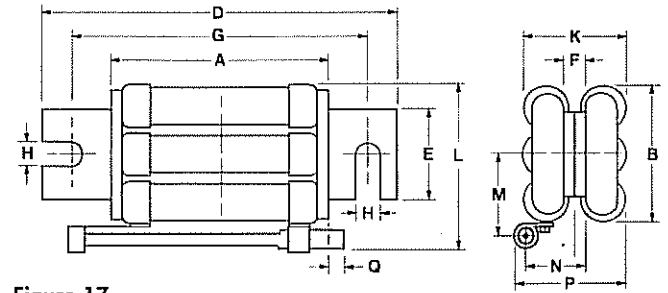


Figure 14

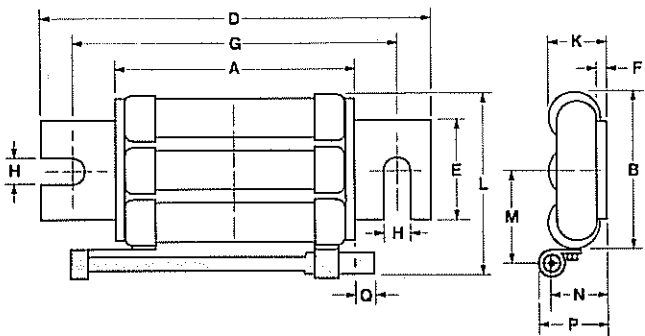


Figure 15

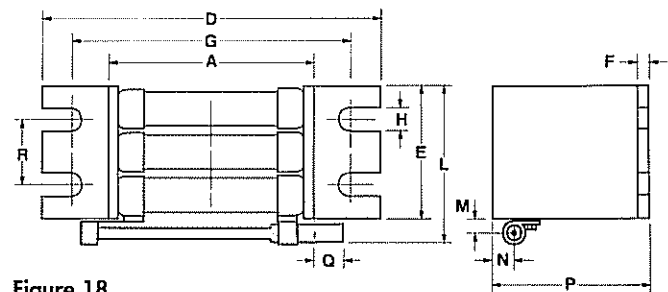


Figure 16

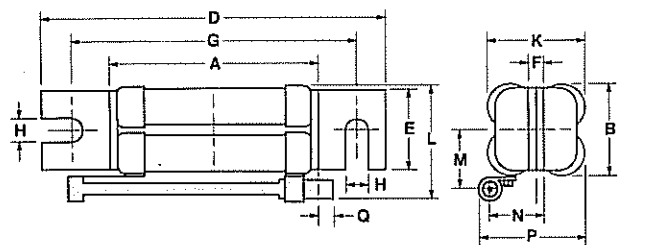


Figure 17

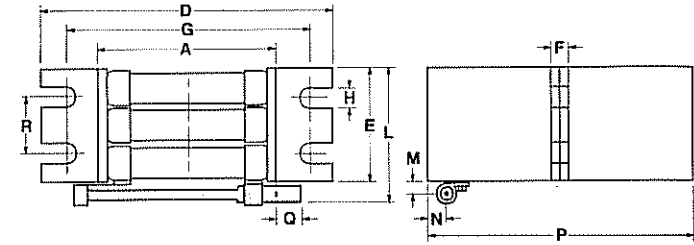


Figure 18

Type	Rating Amp	Fig. No.	Dimensions in millimetres													
			A	B	D	E	F	G	H	K	L	M	N	P	Q	R
GSMJ & *GISMJ	63	11	75	17.5	125	12	1.6	110	6.3	18.3	27.5	14	19	23.4	18	-
	120	12	75	41	135	38	3.2	110	11	21	50	25.5	20.5	25	15	-
	180	13	75	61	135	38	3.2	110	11	21	71	36	20.5	25	15	-
	240	14	75	41	135	38	6.4	110	11	42	50	25.5	23.7	46	15	-
	300	15	75	61	135	38	6.4	110	11	42	71	36	23.7	46	15	-
	350	16	75	61	135	38	9.6	110	11	45	71	36	26.8	49	14	-
	400-460	17	75	-	135	60	4.8	110	11	-	70	5	9.5	70	18	30
	520-680		77	-	135	80	6.3	110	11	-	90	5	9.5	90	20	40
	800	18	75	-	135	60	9.6	110	11	-	70	5	9.5	140	18	30
1000-1200	77		-	135	80	12.6	110	11	-	90	5	9.5	180	20	40	
GSMK & *GISMK	32-63	11	95	17.5	145	12	1.6	130	6.3	18.3	27.5	14	19	23.4	11	-
	120	12	95	41	155	38	3.2	130	11	21	50	25.5	20.5	25	9	-
	180	13	95	61	155	38	3.2	130	11	21	71	36	20.5	25	9	-
	240	14	95	41	155	38	6.4	130	11	42	50	25.5	23.7	46	9	-
	300	15	95	61	155	38	6.4	130	11	42	71	36	23.7	46	9	-
	350	16	95	61	155	38	9.6	130	11	45	71	36	26.8	49	7	-
	400-460	17	95	-	155	60	4.8	130	11	-	70	5	9.5	70	14	30
	520-680		97	-	155	80	6.3	130	11	-	90	5	9.5	90	12	40
	800	18	95	-	155	60	9.6	130	11	-	70	5	9.5	140	14	30
1000-1200	97		-	155	80	12.6	130	11	-	90	5	9.5	180	12	40	

Note: Indicator fuse link shown shaded if fitted.

* Add-on indicator fuse link conversion kits are not available for this range of fuse links. For indicated version order as GISMJ/-- or GISMK/--.