

'GSD' Fast Acting HRC Fuse Links

Type 'GSD' 125-700 Amp

Fast acting fuse links, rated
125 - 700 Amp.

A.C. rating: 180 Volt rms tested to
212 Volt rms.

D.C. rating: 200 Volt d.c. time
constant 20ms.

Specification and List Numbers

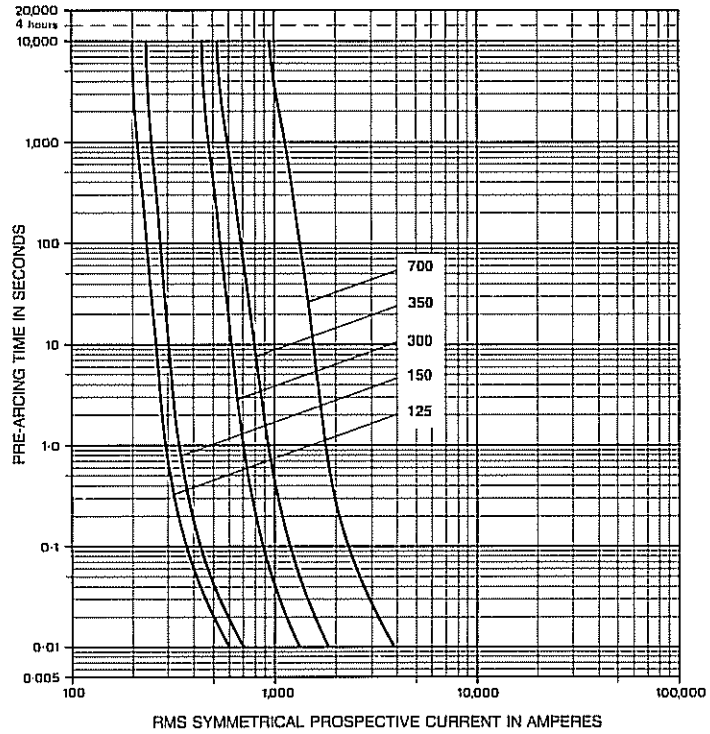
Voltage Rating		Current Rating	List Number	Minimum Pre-Arcing I ² t	Total I ² t	Cut-Off Current	Power Dissipation		Top Cap Temp. Rise	Indicator Pack Ref. ‡	Dimensional Reference
Volt a.c. RMS	Volt d.c. @ 20ms	Amp		A ² sec	@ 100kA 180Volt RMS A ² sec	@ 100kA 180Volt RMS kA	@ In	@ 0.5 in	@ 20°C ambient °C		(Page 1/40)
ASTA Certified 180 also tested to 212	200	125	GSD125	3,100	23,400	9.0	12.0	2.2	49	GSIPAS	2
		150	GSD150	5,000	33,400	10.0	14.0	2.4	57		
		300	GSD300	20,000	190,000	23.0	25.0	4.5	58	GSIPAL	3
		350	GSD350	36,000	360,000	24.0	29.0	4.0	54		
		700	GSD700	120,000	1,170,000	36.0	60.0	11.0	74		

‡ Indicated fuse links.

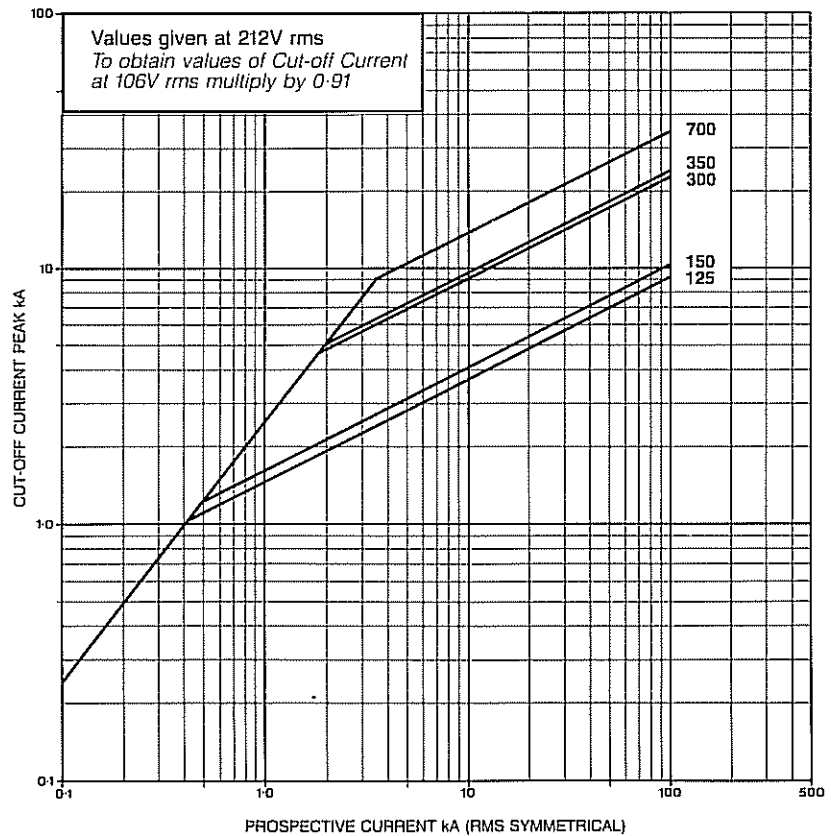
"Add-on" indicator fuse link conversion kits comprising a trip indicator fuse link and a pair of easily assembled clips are available.

Characteristics

Type 'GSD'
Time/Current Characteristics
125-700 Amp



Type 'GSD'
Cut-off Current Characteristics
125-700 Amp

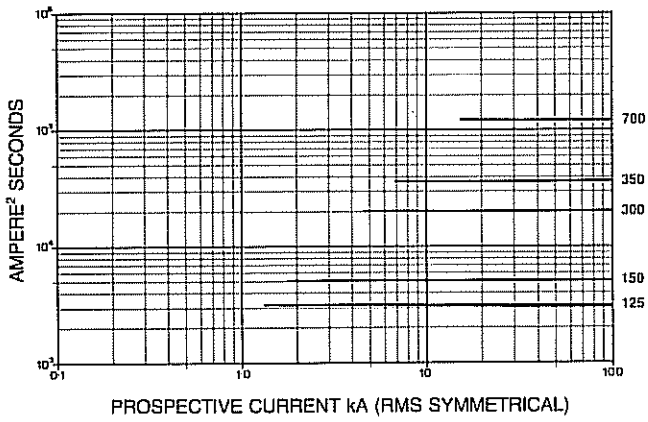


1/10

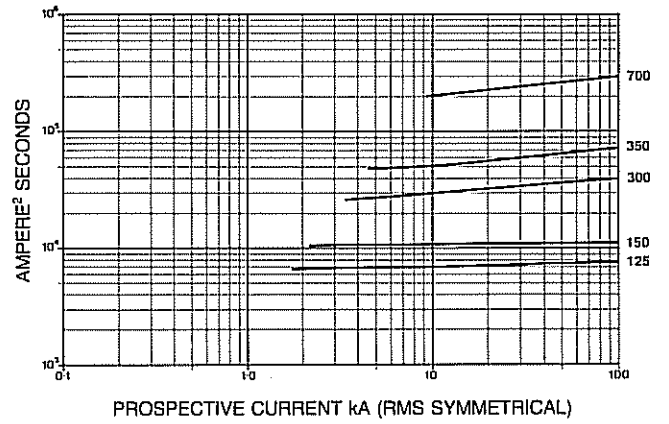
Type 'GSD'

I^2t variations with prospective current

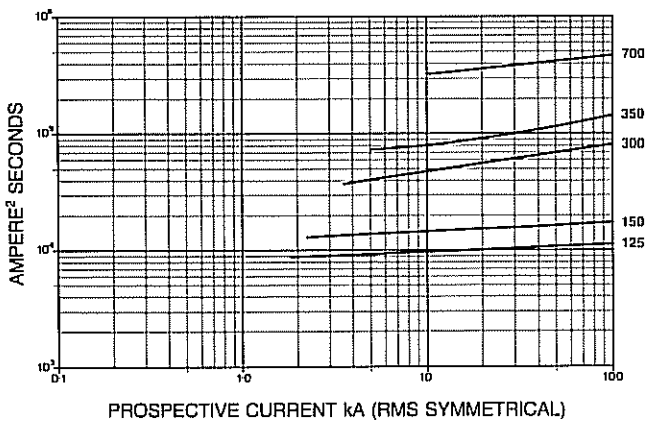
Pre-arcing



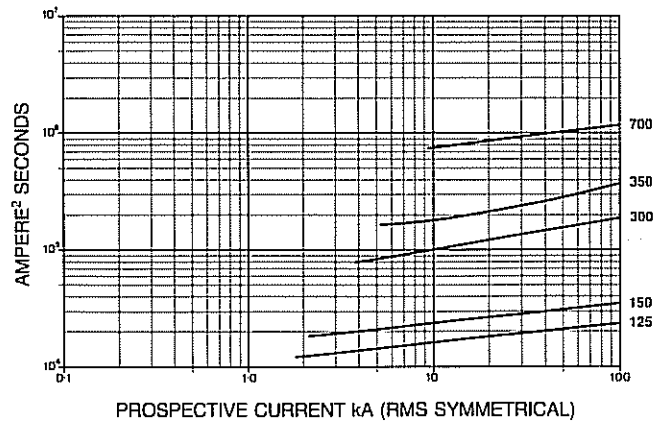
53 Volt RMS



106 Volt RMS

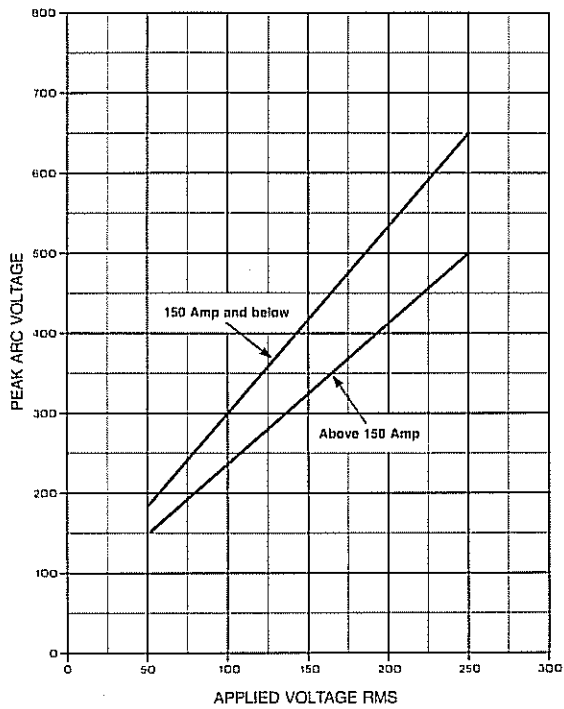


212 Volt RMS

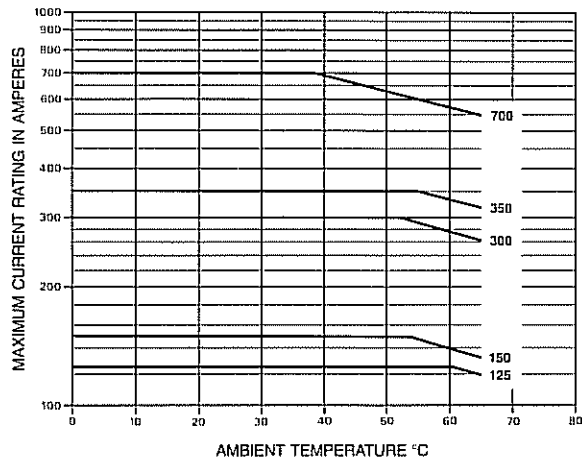


11/12

Type 'GSD'
Variation of arc voltage with applied voltage



Type 'GSD'
De-rating at high ambients



Type 'GSD'
Forced air cooling
up-rating curve

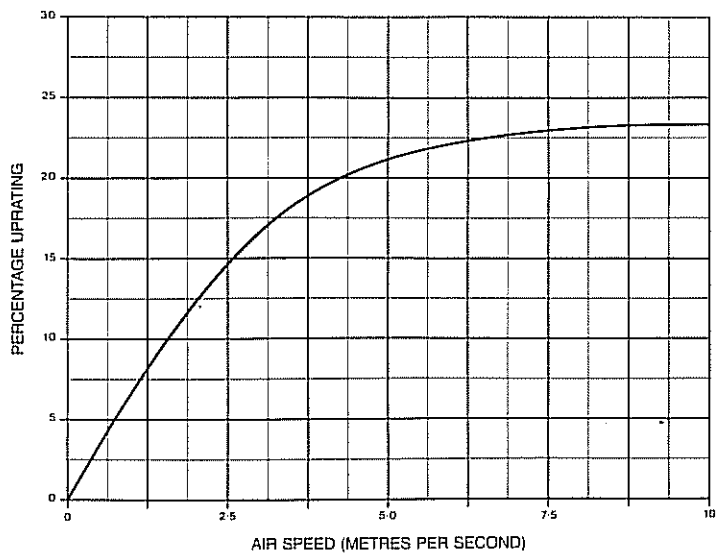


Figure 1

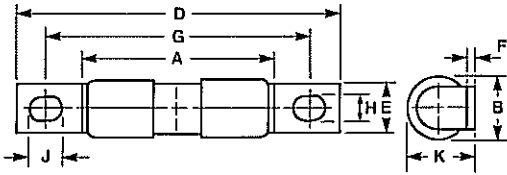


Figure 3

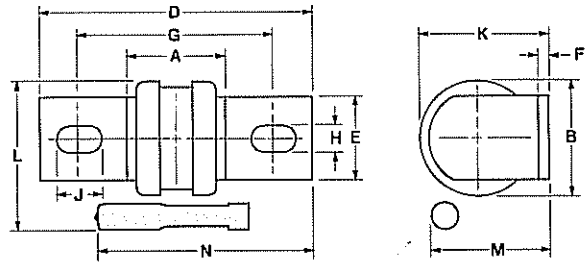


Figure 2

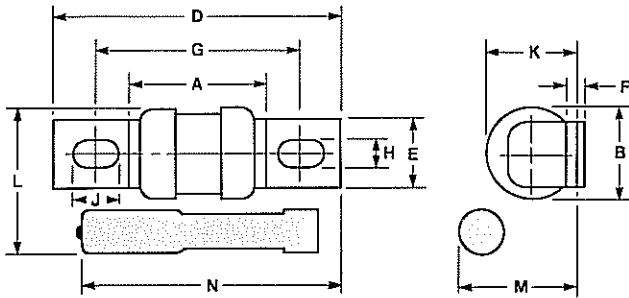


Figure 4

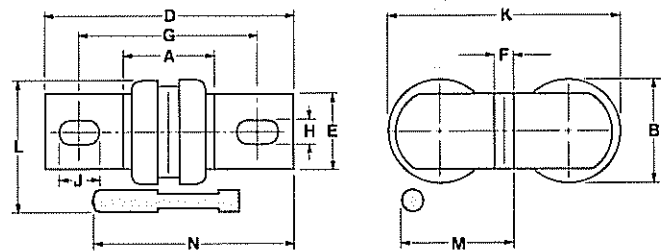
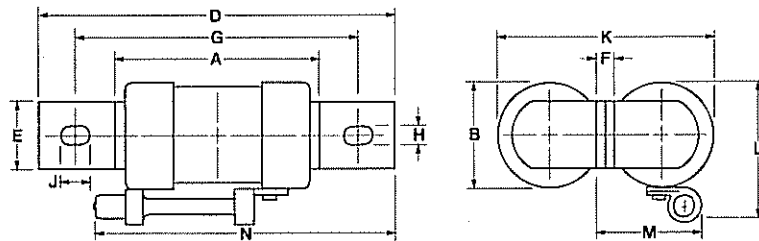


Figure 5



Type	Rating Amp	Fig. No.	Dimensions in millimetres											
			A max	B	D max	E	F	G	H	J	K	L	M	N
GSA#	5-20	1	28.2	8.0	47.6	6.4	0.8	38.1	3.8	5.0	8.7	-	-	-
GSA	25-100	2	29.2	17.3	58.4	12.7	1.6	41.8	6.4	7.9	18.2	28.6	24.6	52.4
	125-250	3	32.6	34.6	85	25.4	3.2	60.3	10.3	15.5	38.8	45.3	35.2	64.3
GSD	300-600	4	32.6	34.6	85	25.4	6.4	60.3	10.3	15.5	77.6	45.3	38.4	64.3
	125-150	2	29.2	17.3	58.4	12.7	1.6	41.8	6.4	7.9	18.2	28.6	24.6	52.4
	300, 350	3	32.6	34.6	85	25.4	3.2	60.3	10.3	15.5	38.8	45.3	35.2	64.3
GSB	700	4	32.6	34.6	85	25.4	6.4	60.3	10.3	15.5	77.6	45.3	38.4	64.3
	5-20	1	55.0	8.0	74.6	6.4	0.8	65.0	3.8	5.0	8.7	-	-	-
GSB	25-75	2	50.0	17.3	79.5	12.0	1.6	61.8	6.4	7.9	18.2	28.6	24.6	70.4
	100-250	3	55	34.6	107.0	25.4	3.2	81.7	10.3	15.5	38.8	45.3	35.2	84.1
	300-500	4	55	34.6	107.0	25.4	6.4	81.7	10.3	15.5	77.6	45.3	38.4	84.1
*CGS 1000 & CGIS 1000	400-600	5	77.8	40.5	136.5	25.4	6.4	110	10.3	15.5	83.3	49.6	35.0	113

Note: Add-on indicator fuse link shown shaded.

* Add-on indicator fuse link conversion kits are not available for this range of fuse links. For indicated version order as CGIS 1000/---.

Indicator not available on this size.