

# GSB<sup>®</sup> Fast Acting HRC Fuse Links

## Type 'GSB' 5-500 Amp

Fast acting fuse links, rated 5 - 500Amp.

A.C. rating: 600 Volt rms tested to 707 Volt rms.

D.C. rating: 400 Volt d.c. time constant 20ms.

## Specification and List Numbers

Voltage Rating		Current Rating	List Number	Minimum Pre-Arcing I <sup>2</sup> t	Total I <sup>2</sup> t	Cut-Off Current	Power Dissipation		Top Cap Temp. Rise	Indicator Pack Ref. ‡	Dimensional Reference
Volt a.c. RMS	Volt d.c. @ 20ms	Amp		A <sup>2</sup> sec	@ 100kA 600Volt RMS A <sup>2</sup> sec	@ 100kA 600Volt RMS kA	@ In	@ 0.5 in	@ 20°C ambient °C		(Page 1/40)
ASTA Certified 600 also tested to 707	400	5	GSB5	0.57	15	0.75	2.1	0.4	26	*	1
		10	GSB10	2.3	53	1.0	3.6	0.6	36		
		15	GSB15	11	260	1.5	3.9	0.8	33		
		20	GSB20	28	580	1.9	7.3	1.2	52		
		25	GSB25	40	600	2.7	6.7	1.4	44	GSIPBS	2
		45	GSB45	170	2,300	4.4	10.0	2.0	60		
		50	GSB50	250	2,900	5.0	12.0	2.5	63		
		75	GSB75	1,000	11,000	7.0	12.5	2.5	47		
		100	GSB100	2,600	32,000	9.0	16.0	2.5	58	GSIPBL	3
		150	GSB150	5,500	49,000	10.0	26.0	4.0	62		
		200	GSB200	12,000	100,000	14.0	28.0	4.5	63		
		250	GSB250	25,000	170,000	17.0	37.0	6.5	76		
		300	GSB300	36,000	290,000	19.0	35.5	6.5	68	GSIPBL	4
		400	GSB400	62,000	480,000	24.0	62.0	11.5	85		
		450	GSB450	80,000	550,000	24.0	70.0	12.0	90		
		500	GSB500	100,000	610,000	27.0	80.0	13.0	90		

\* Indicator pack not available

‡ Indicated fuse links.

"Add-on" indicator fuse link conversion kits comprising a trip indicator fuse link and a pair of easily assembled clips are available.

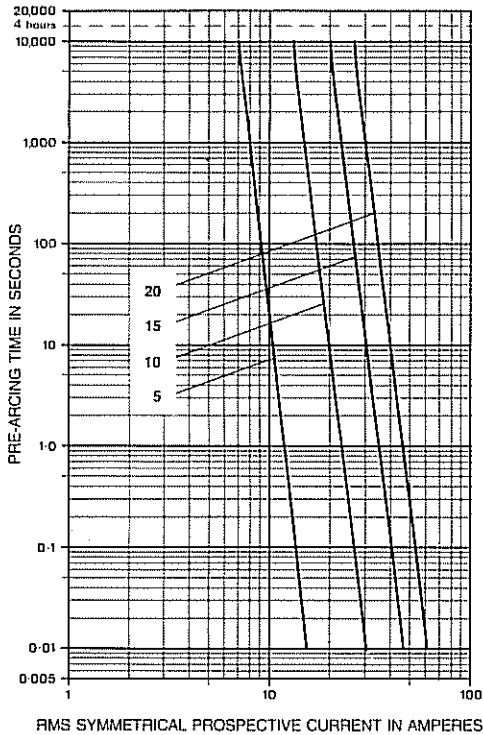
# Characteristics

Type 'GSB'

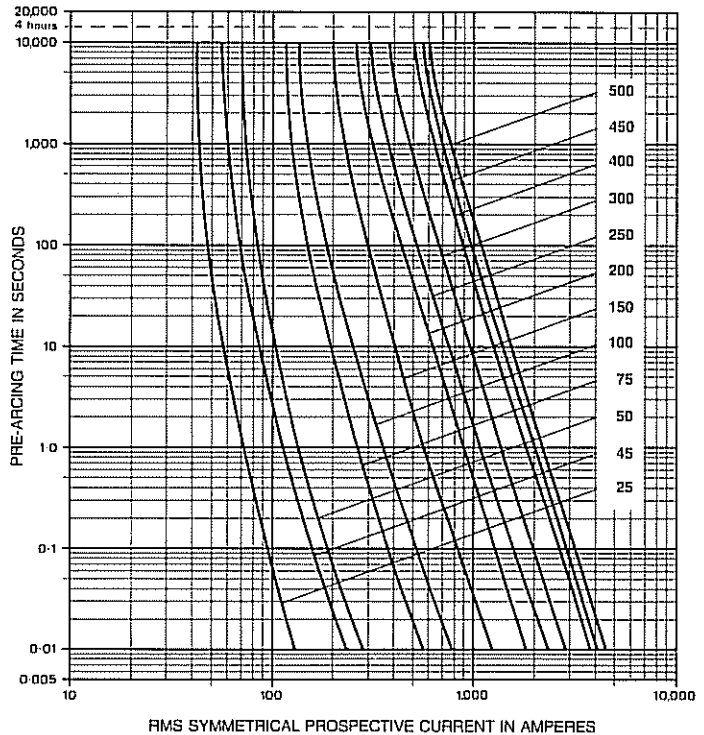
Time/Current Characteristics

5-500 Amp

5-20 Amp



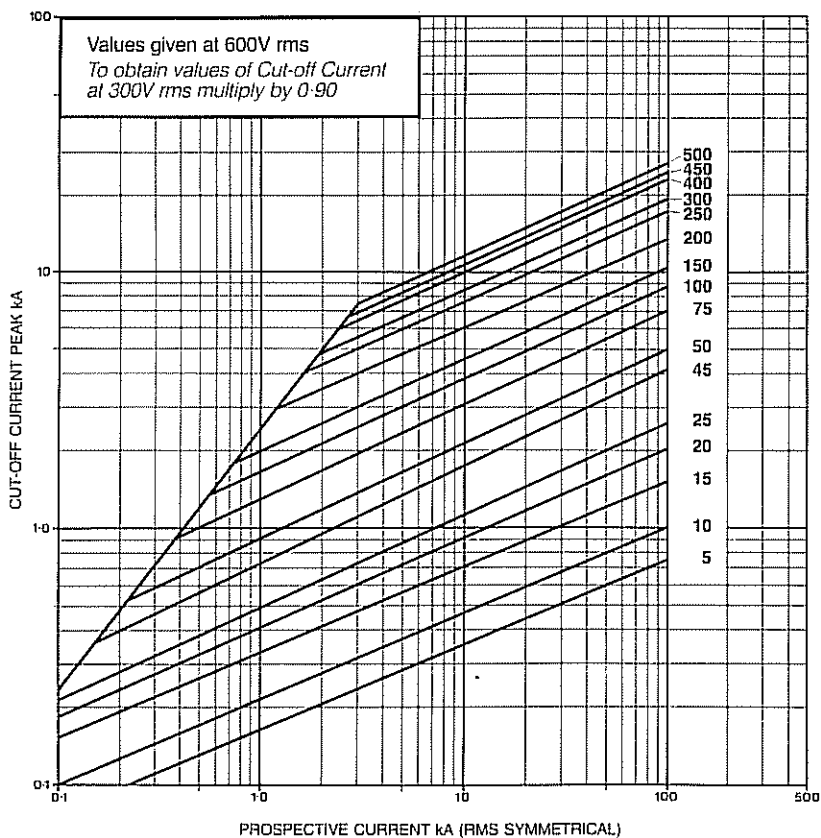
25-500 Amp



Type 'GSB'

Cut-off Current Characteristics

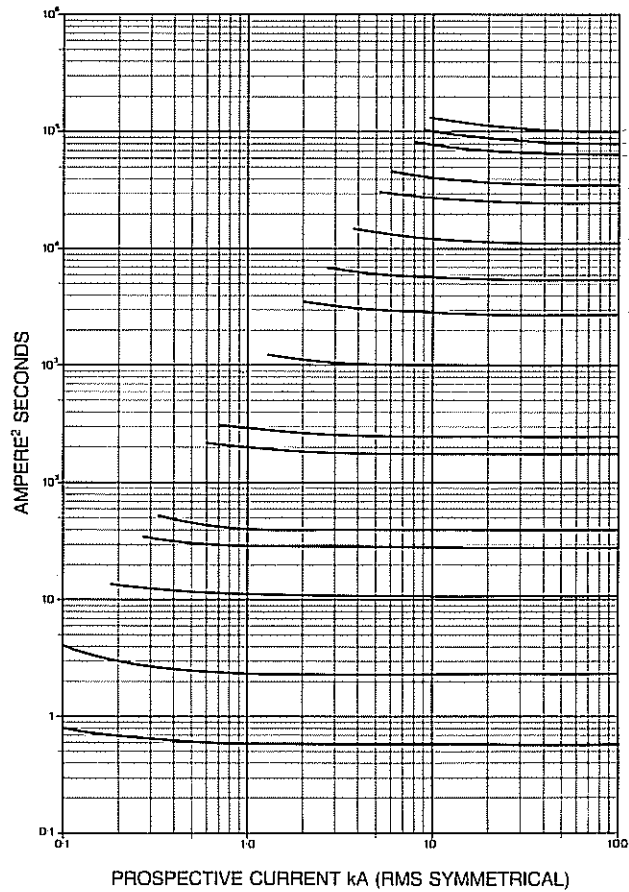
5-500 Amp



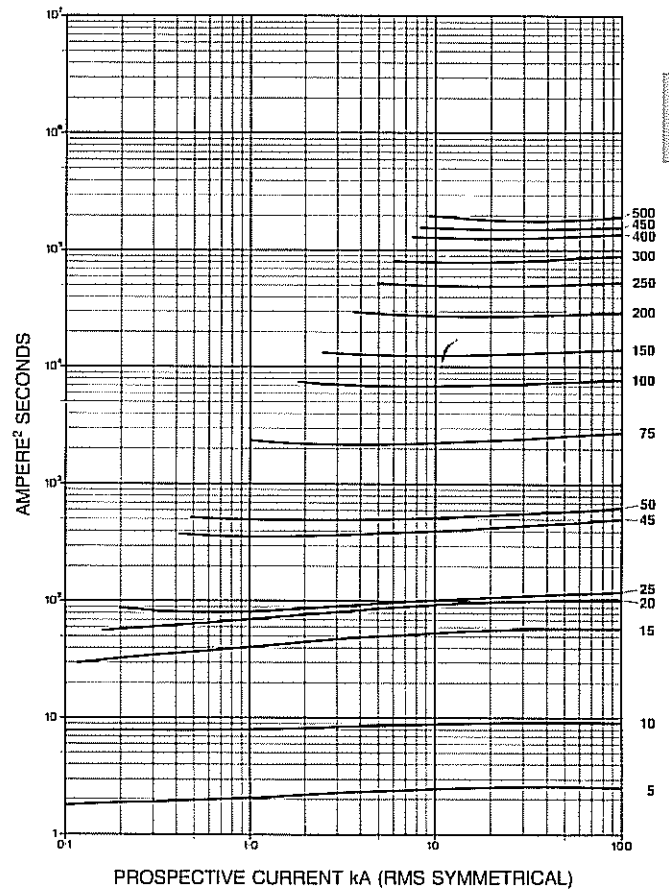
# Type 'GSB'

## $I^2t$ variations with prospective current

### Pre-arcing



### 150 Volt RMS

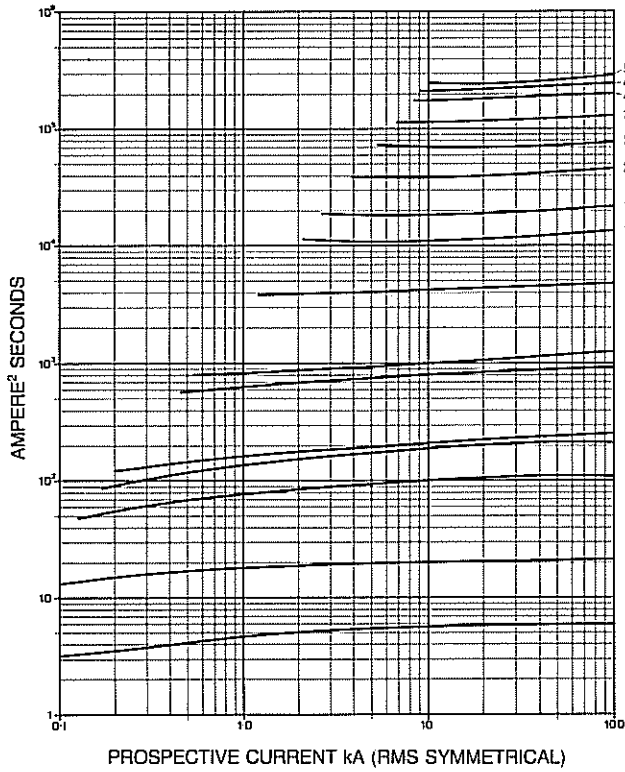


Type 'GSB'

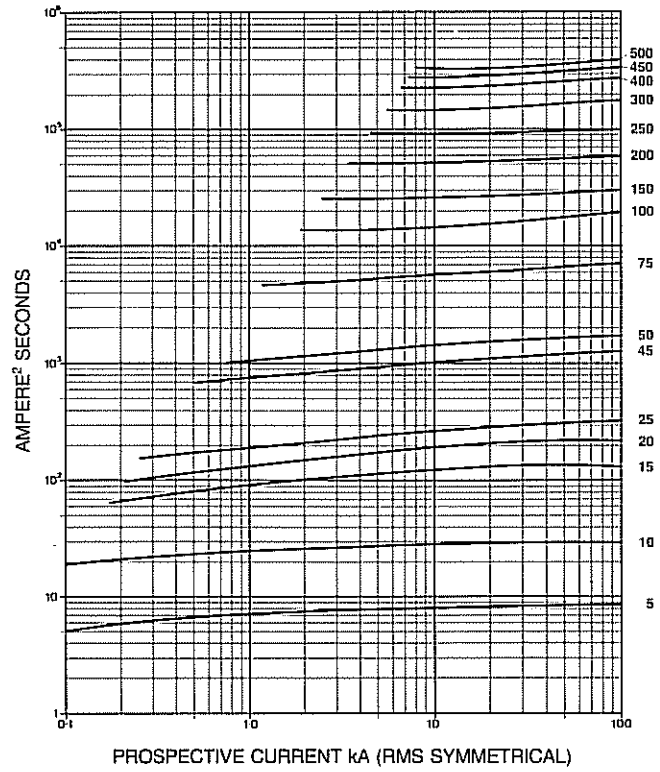
$I^2t$  variations with prospective current

17/16

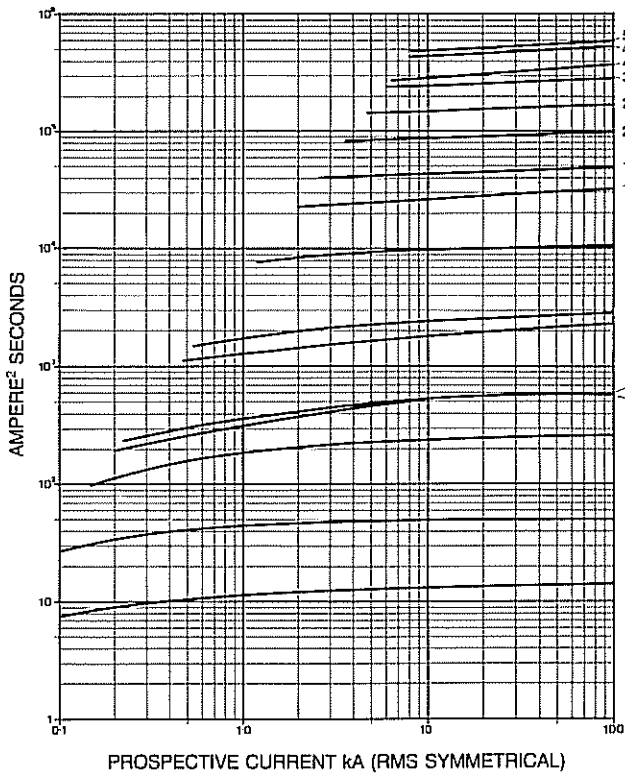
300 Volt RMS



415 Volt RMS

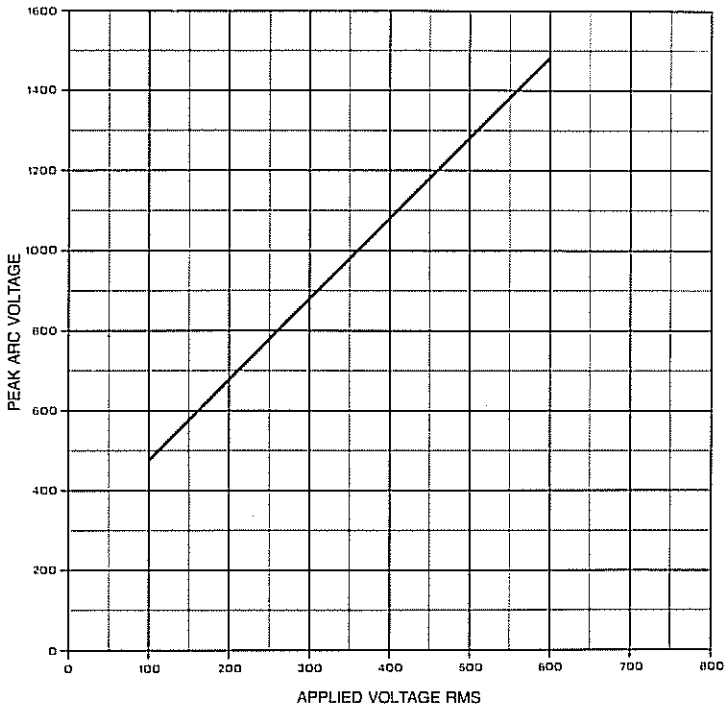


600 Volt RMS



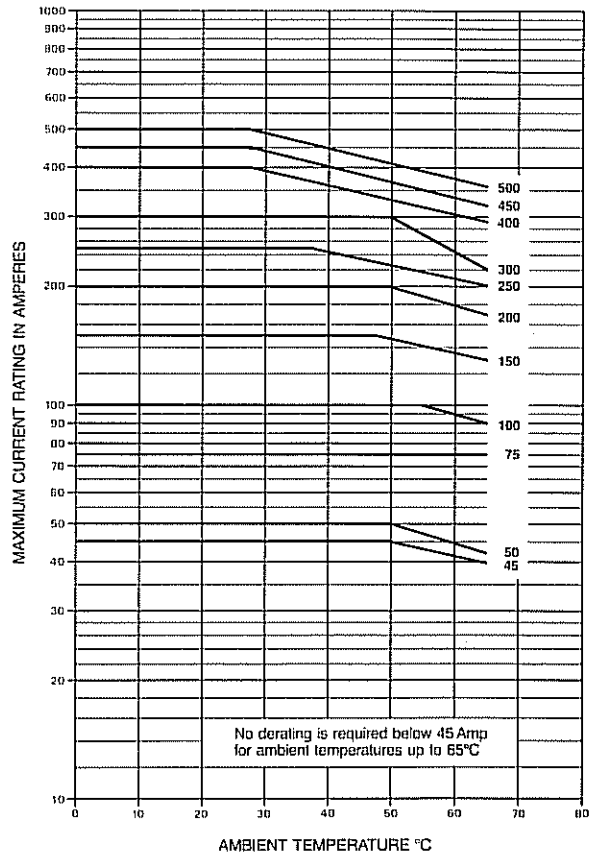
**Type 'GSB'**

**Variation of arc voltage with applied voltage**



**Type 'GSB'**

**De-rating at high ambients**



**Type 'GSB'**

**Forced air cooling up-rating curve**

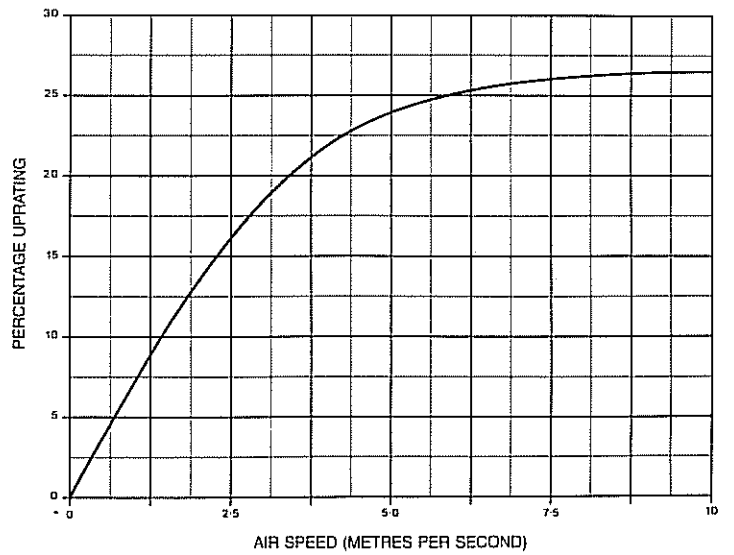


Figure 1

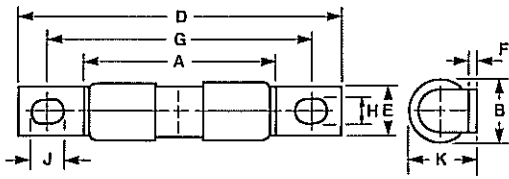


Figure 3

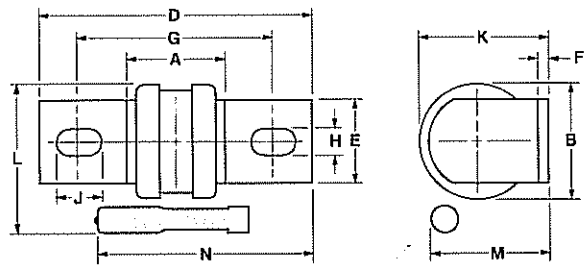


Figure 2

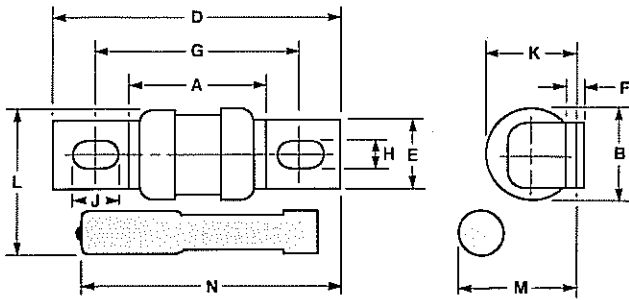


Figure 4

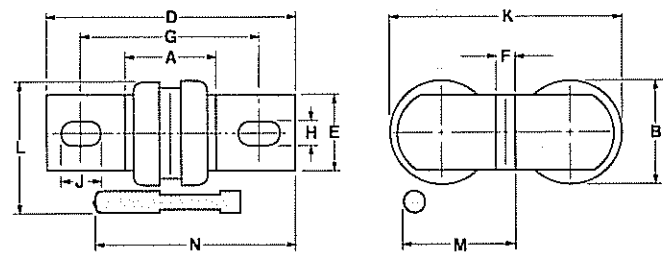
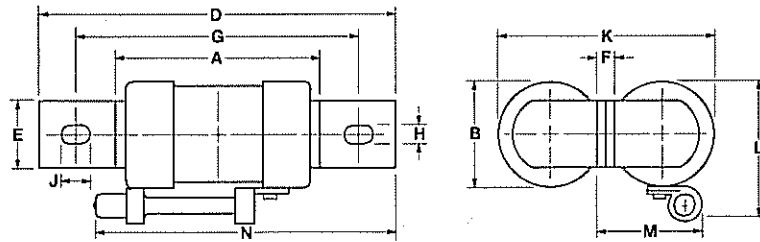


Figure 5



Type	Rating Amp	Fig. No.	Dimensions in millimetres											
			A max	B	D max	E	F	G	H	J	K	L	M	N
GSA#	5-20	1	28.2	8.0	47.6	6.4	0.8	38.1	3.8	5.0	8.7	-	-	-
GSA	25-100	2	29.2	17.3	58.4	12.7	1.6	41.8	6.4	7.9	18.2	28.6	24.6	52.4
	125-250	3	32.6	34.6	85	25.4	3.2	60.3	10.3	15.5	38.8	45.3	35.2	64.3
	300-600	4	32.6	34.6	85	25.4	6.4	60.3	10.3	15.5	77.6	45.3	38.4	64.3
GSD	125-150	2	29.2	17.3	58.4	12.7	1.6	41.8	6.4	7.9	18.2	28.6	24.6	52.4
	300, 350	3	32.6	34.6	85	25.4	3.2	60.3	10.3	15.5	38.8	45.3	35.2	64.3
	700	4	32.6	34.6	85	25.4	6.4	60.3	10.3	15.5	77.6	45.3	38.4	64.3
GSA	5-20	1	55.0	8.0	74.6	6.4	0.8	65.0	3.8	5.0	8.7	-	-	-
GSB	25-75	2	50.0	17.3	79.5	12.0	1.6	61.8	6.4	7.9	18.2	28.6	24.6	70.4
	100-250	3	55	34.6	107.0	25.4	3.2	81.7	10.3	15.5	38.8	45.3	35.2	84.1
	300-500	4	55	34.6	107.0	25.4	6.4	81.7	10.3	15.5	77.6	45.3	38.4	84.1
*CGS 1000 & CGIS 1000	400-600	5	77.8	40.5	136.5	25.4	6.4	110	10.3	15.5	83.3	49.6	35.0	113

Note: Add-on indicator fuse link shown shaded.

\* Add-on indicator fuse link conversion kits are not available for this range of fuse links. For indicated version order as CGIS 1000/- - -.

# Indicator not available on this size.

1/410