

# 'GSA' Fast Acting HRC Fuse Links

## Type GSA 5-600 Amp

Fast acting fuse links, rated 5 - 600 Amp.

A.C. rating: 240 Volt rms tested to  
318 Volt rms.

D.C. rating: 200 Volt d.c. time constant 20ms.

## Specification and List Numbers

Voltage Rating		Current Rating	List Number	Minimum Pre-Arcing $I^2t$	Total $I^2t$	Cut-Off Current	Power Dissipation		Top Cap Temp. Rise	Indicator Pack Ref. ‡	Dimensional Reference
Volt a.c. RMS	Volt d.c. @ 20ms	Amp		A <sup>2</sup> sec	@ 100kA 240Volt RMS A <sup>2</sup> sec	@ 100kA 240Volt RMS kA	@ In	@ 0.5 in	@ 20°C ambient °C		(Page 1/40)
ASTA Certified 240 also tested to 318	200	5	GSA5	1.1	38	1.2	0.8	0.15	11	*	1
		10	GSA10	4.3	140	2.0	1.6	0.3	18		
		15	GSA15	12	350	2.7	2.5	0.5	25		
		20	GSA20	17	590	2.8	3.5	0.7	33		
		25	GSA25	74	800	2.8	2.6	0.6	18		
		35	GSA35	150	1,700	3.8	4.0	0.8	27	GSIPAS	2
		50	GSA50	400	5,400	5.6	5.2	0.9	34		
		75	GSA75	890	6,500	5.9	7.1	1.4	34		
		100	GSA100	2,000	14,400	9.4	9.0	1.8	40	GSIPAL	3
		125	GSA125	2,100	56,000	10.0	12.5	2.5	40		
		150	GSA150	3,200	84,000	12.0	14.5	3.0	42		
		200	GSA200	7,500	170,000	14.0	21.0	4.0	44		
		250	GSA250	10,700	250,000	18.0	26.0	5.5	46		
		300	GSA300	13,100	190,000	17.0	31.0	5.5	60	GSIPAL	4
		350	GSA350	19,000	270,000	18.0	36.5	7.0	61		
		400	GSA400	34,300	510,000	22.0	38.5	7.0	62		
		500	GSA500	55,000	780,000	27.0	48.0	9.0	64		
		600	GSA600	95,000	1,400,000	32.0	54.0	10.0	68		

\* Indicator pack not available.

‡ Indicated fuse links.

"Add-on" indicator fuse link conversion kits comprising a trip indicator fuse link and a pair of easily assembled clips are available.

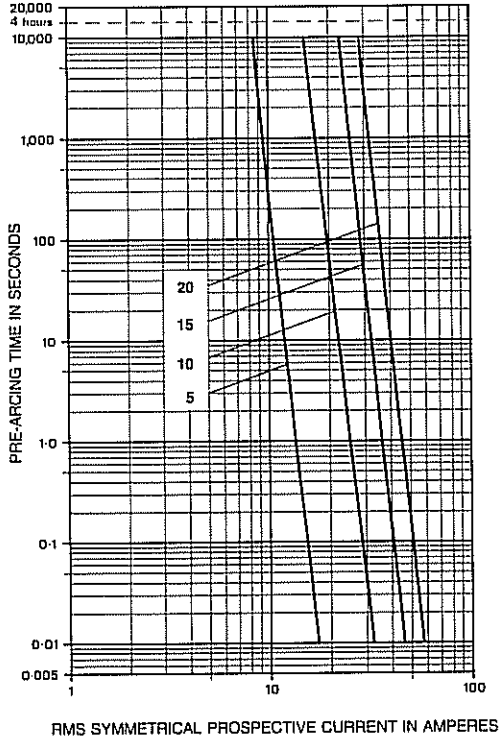
# Characteristics

Type 'GSA'

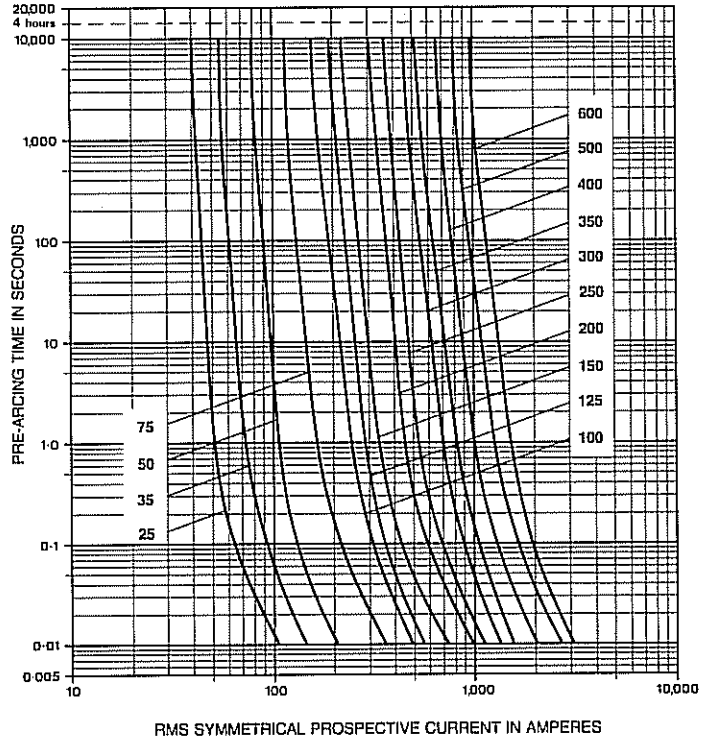
Time/Current Characteristics

5-600 Amp

5-20 Amp



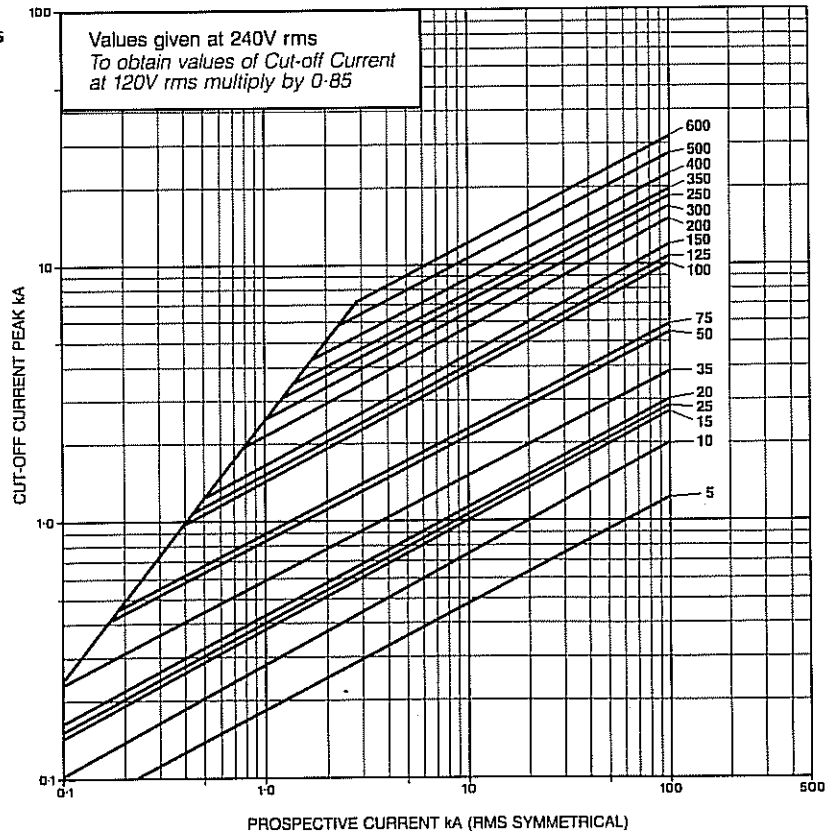
25-600 Amp



Type 'GSA'

Cut-off Current Characteristics

5-600 Amp

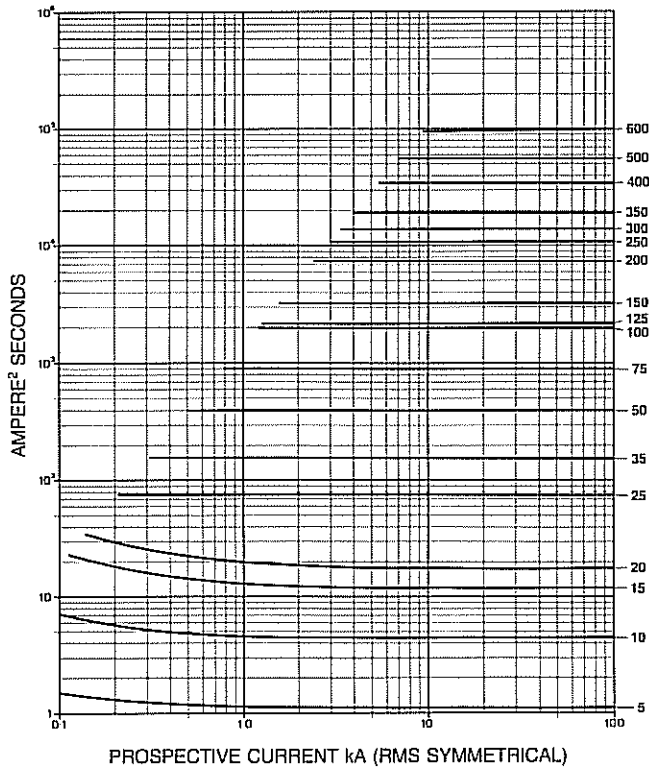


1/6

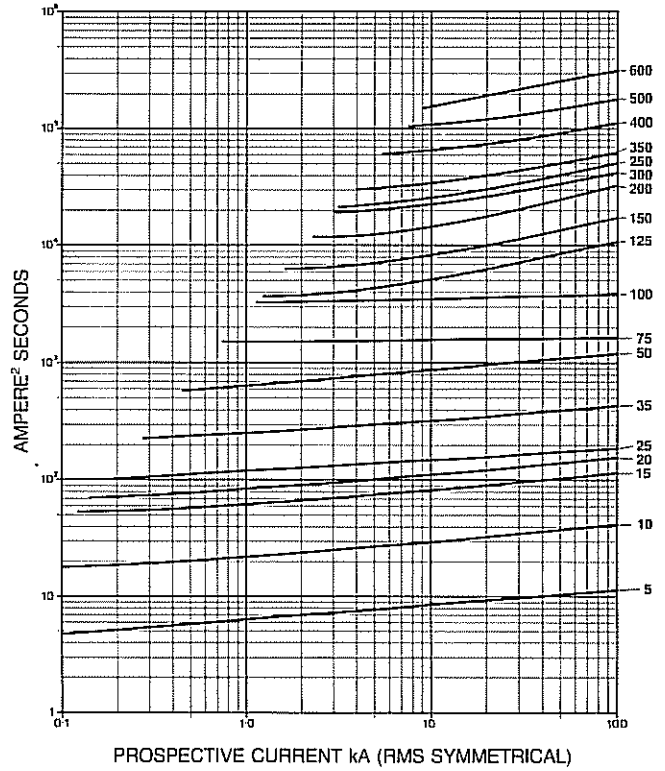
Type 'GSA'

$I^2t$  variations with prospective current

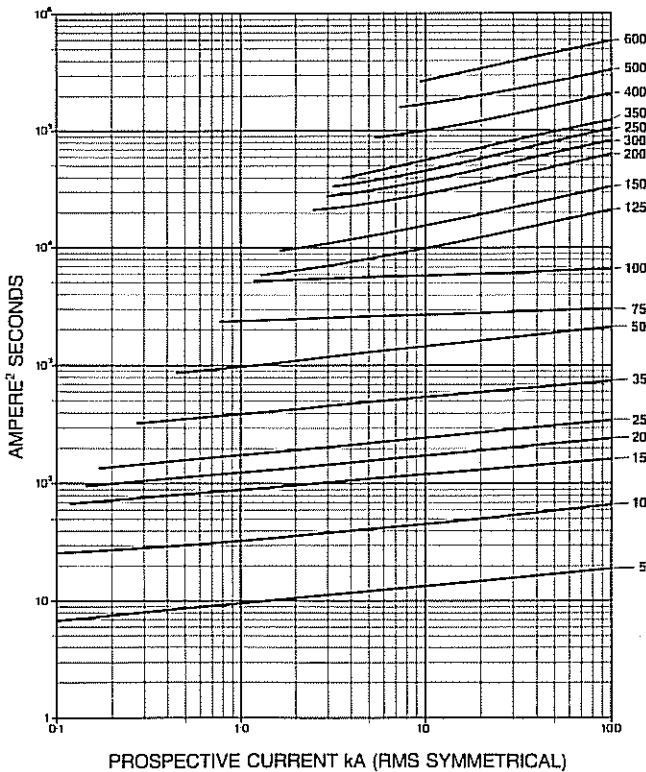
Pre-arcing



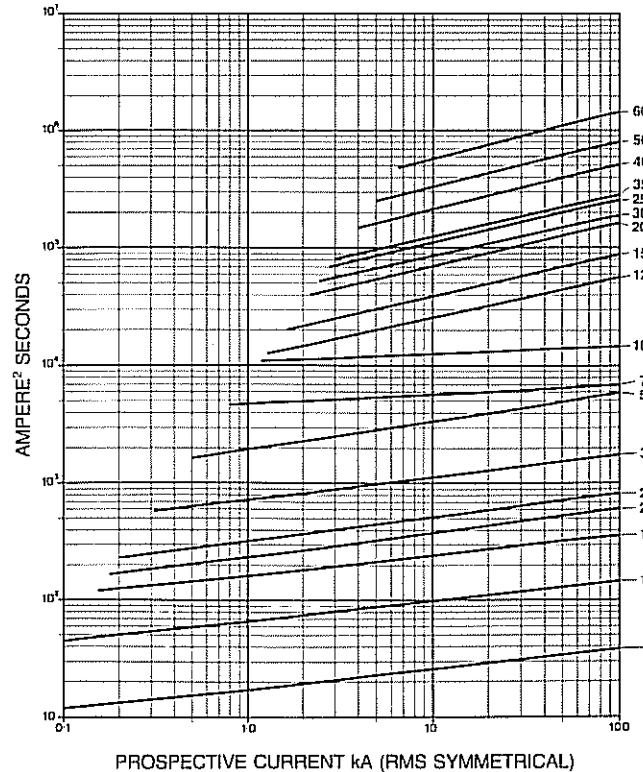
60 Volt RMS



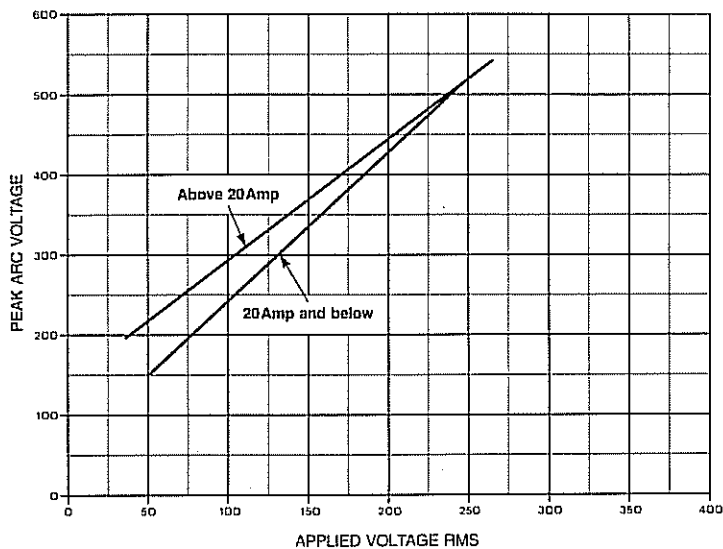
120 Volt RMS



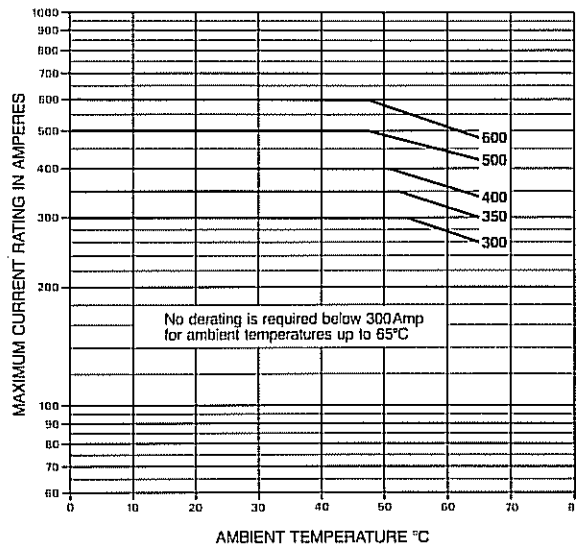
240 Volt RMS



**Type 'GSA'**  
**Variation of arc voltage with applied voltage**



**Type 'GSA'**  
**De-rating at high ambients**



**Type 'GSA'**  
**Forced air cooling up-rating curve**

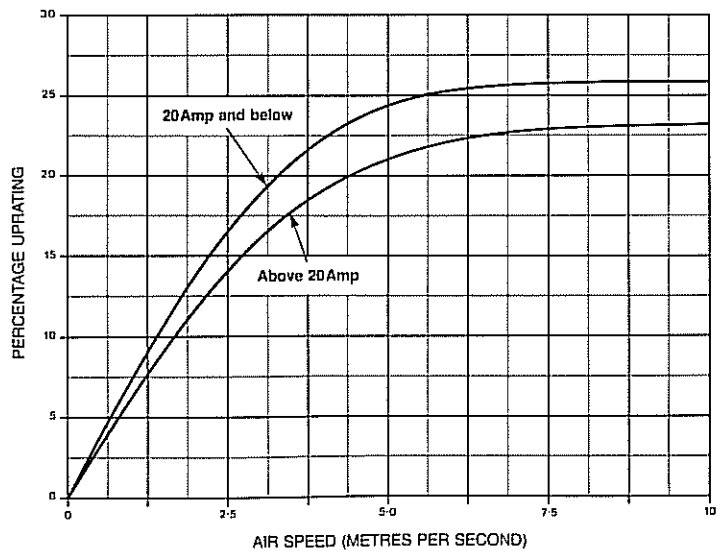


Figure 1

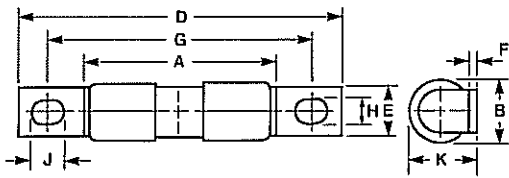


Figure 3

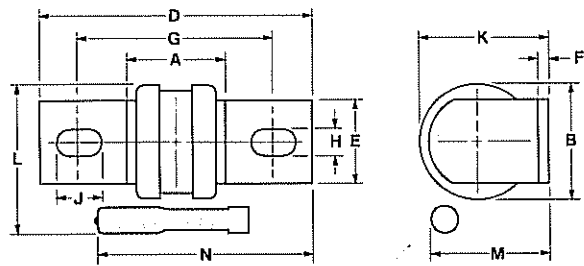


Figure 2

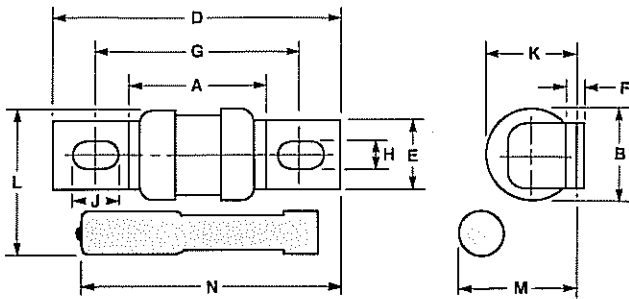


Figure 4

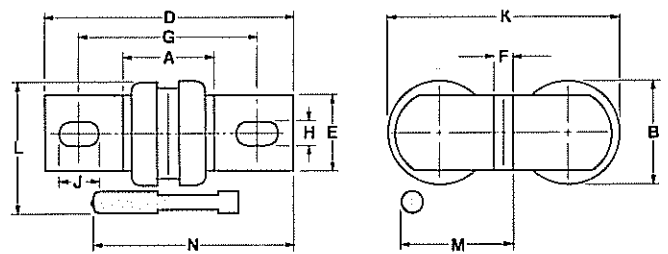
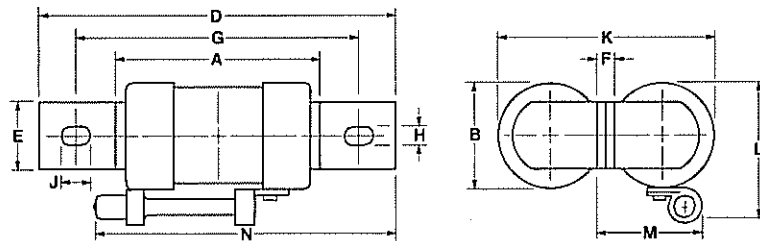


Figure 5



Type	Rating Amp	Fig. No.	Dimensions in millimetres											
			A max	B	D max	E	F	G	H	J	K	L	M	N
GSA#	5-20	1	28.2	8.0	47.6	6.4	0.8	38.1	3.8	5.0	8.7	-	-	-
GSA	25-100	2	29.2	17.3	58.4	12.7	1.6	41.8*	6.4	7.9	18.2	28.6	24.6	52.4
	125-250	3	32.6	34.6	85	25.4	3.2	60.3	10.3	15.5	38.8	45.3	35.2	64.3
	300-600	4	32.6	34.6	85	25.4	6.4	60.3	10.3	15.5	77.6	45.3	38.4	64.3
GSD	125-150	2	29.2	17.3	58.4	12.7	1.6	41.8	6.4	7.9	18.2	28.6	24.6	52.4
	300, 350	3	32.6	34.6	85	25.4	3.2	60.3	10.3	15.5	38.8	45.3	35.2	64.3
	700	4	32.6	34.6	85	25.4	6.4	60.3	10.3	15.5	77.6	45.3	38.4	64.3
GSB	5-20	1	55.0	8.0	74.6	6.4	0.8	65.0	3.8	5.0	8.7	-	-	-
GSB	25-75	2	50.0	17.3	79.5	12.0	1.6	61.8*	6.4	7.9	18.2	28.6	24.6	70.4
	100-250	3	55	34.6	107.0	25.4	3.2	81.7	10.3	15.5	38.8	45.3	35.2	84.1
	300-500	4	55	34.6	107.0	25.4	6.4	81.7	10.3	15.5	77.6	45.3	38.4	84.1
*CGS 1000 & CGIS 1000	400-600	5	77.8	40.5	136.5	25.4	6.4	110	10.3	15.5	83.3	49.6	35.0	113

Note: Add-on indicator fuse link shown shaded.

\* Add-on indicator fuse link conversion kits are not available for this range of fuse links. For indicated version order as CGIS 1000/- - -.

# Indicator not available on this size.

1/49