

gF, gI-gG, aM

CYLINDRICAL FUSE-LINKS



DOMESTIC AND INDUSTRIAL CYLINDRICAL FUSE-LINKS

Ferraz Shawmut gF, gI-gG and aM fuse-links cover a wide range of physical sizes and ampere ratings for 250, 400, 500, and 690 volts AC. gF fuse-links are for domestic use. gI-gG and aM fuse-links are for industrial applications. Most ratings are available with an optional indicator. All industrial fuse-links have the option of a built-in striker. All cylindrical fuse-links have ceramic bodies and silver-plated ferrules.

gF

FULL RANGE PROTECTION

- 7 physical sizes from 6.3 x 23mm to 10.3 x 38 mm
- 250 and 400 Volt ratings - 0.5A through 32A
- Most ratings available with indicator
- Meet IEC, NFC, UNE and British standards

gI-gG

FULL RANGE PROTECTION

- 4 physical sizes from 8 x 31mm to 22 x 58 mm
- 400, 500 and 690 Volt ratings - 0.5A through 125A
- Most ratings available with indicator
- Meet IEC, NFC and UNE standards
- Approved by Lloyds Register of Shipping and Bureau Veritas

gI-gG

FULL RANGE PROTECTION

- Fuse-links with Striker**
- 2 sizes- 14 x 51mm and 22 x 58mm
 - 400, 500 and 690 Volt ratings - 4A through 125A
 - All ratings include striker
 - Meet IEC, NFC and UNE standards
 - Approved by Lloyds Register of Shipping and Bureau Veritas

aM

SHORT CIRCUIT PROTECTION

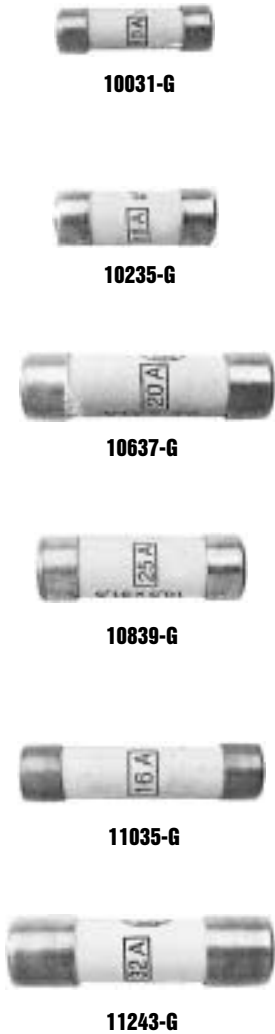
- 4 physical sizes from 8 x 31mm to 22 x 58mm
- 400, 500 and 690 Volt ratings - .16A through 125A
- Most ratings available with indicator
- Meet IEC, NFC and UNE standards
- Approved by Lloyds Register of Shipping and Bureau Veritas

aM

SHORT CIRCUIT PROTECTION

- Fuse-links with Striker**
- 2 sizes - 14 x 51mm and 22 x 58mm
 - 400, 500 and 690 Volt ratings - 2A through 125A
 - All ratings include striker
 - Meet IEC, NFC and UNE standards
 - Approved by Lloyds Register of Shipping and Bureau Veritas

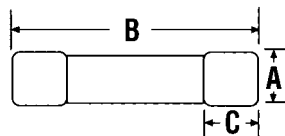
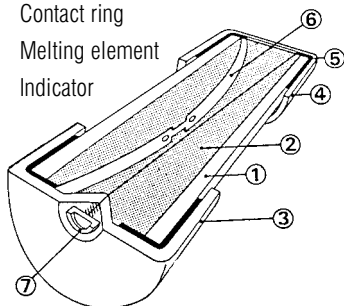
Catalog Numbers, Ratings — gF (Optional Blown-Fuse Indicator)



SIZE (mm x mm)	RATED In CURRENT (A)	RATED VOLTAGE	CATALOG NUMBER		INTERRUPTING RATING (A)	STANDARD PACK/CTN.
			w/o Indicator	w/Indicator		
6.3 x 23	2	250V	10013-G	-	6,000	10/100
	4		10019-G	-		
	6		10023-G	-		
	10		10031-G	-		
8.5 X 23	2	250V	10213-G	12213-G	6,000	10/100
	4		10219-G	12219-G		
	6		10223-G	12223-G		
	10		10231-G	12231-G		
	16		10235-G	12235-G		
10.3 X 25.8	6	250V	10423-G	12423-G	6,000	10/100
	10		10431-G	12431-G		
	16		10435-G	12435-G		
8.5 x 31.5	0.5	400V	10609-G	12609-G	20,000	10/100
	1		10611-G	12611-G		
	2		10613-G	12613-G		
	4		10619-G	12619-G		
	6		10623-G	12623-G		
	8		10627-G	12627-G		
	10		10631-G	12631-G		
	12		10633-G	12633-G		
	16		10635-G	12635-G		
	20		10637-G	12637-G		
25	10639-G	12639-G				
10.3 x 31.5	16	400V	10835-G	12835-G	20,000	10/100
	20		10837-G	12837-G		
	25		10839-G	12839-G		
8.5 x 36	2	400V	11013-G	13013-G	20,000	10/100
	4		11019-G	13019-G		
	6		11023-G	13023-G		
	10		11031-G	13031-G		
	16		11035-G	13035-G		
	20		11037-G	13037-G		
	25		11039-G	13039-G		
	32		11043-G	13043-G		
	10.3 x 38		25	400V		
32		11243-G	13243-G			



- 1 Ceramic body
- 2 Sand
- 3 Indicator contact
- 4 Lower contact
- 5 Contact ring
- 6 Melting element
- 7 Indicator



Dimensions

FUSE SIZE (mm x mm)	A	B	C
6.3 X 23	6.3	23	5
8.5 X 23	8.5	23	5
10.3 x 25.8	10.3	25.8	6.3
8.5 x 31.5	8.5	31.5	6.3
10.3 x 31.5	10.3	31.5	10
8.5 x 36	8.5	36	6.3
10.3 x 38	10.3	38	10

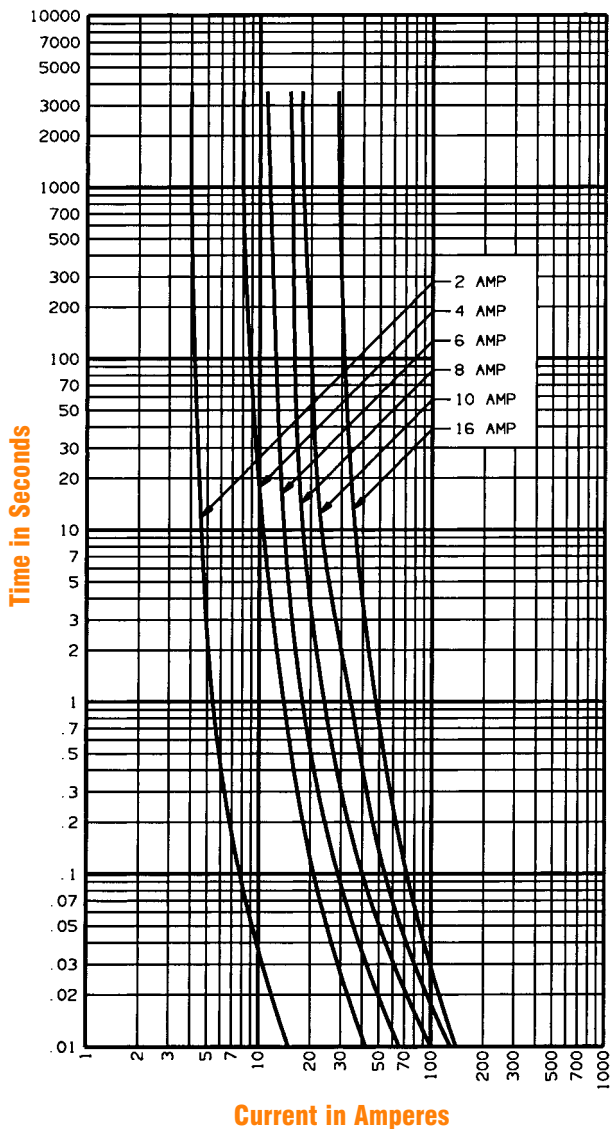
Blown-Fuse Indicator



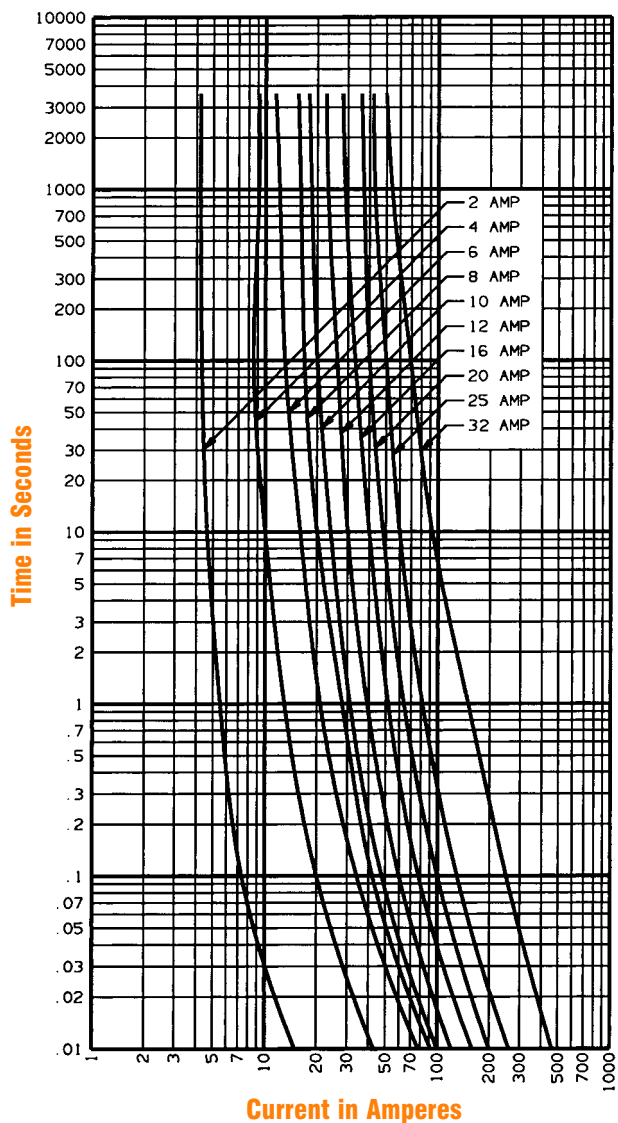
gF

CYLINDRICAL FUSE-LINKS

Melting Time - Current Data — 2-16 Amperes, 250V



Melting Time - Current Data — 2-32 Amperes, 400V



gl-gG

CYLINDRICAL FUSE-LINKS

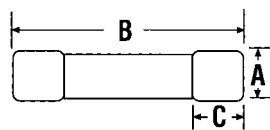
Catalog Numbers, Ratings — gl-gG (Optional Blown-Fuse Indicator)



SIZE (mm x mm)	RATED In CURRENT (A)	RATED VOLTAGE	CATALOG NUMBER		INTERRUPTING RATING (A)	STANDARD PACK/CTN.				
			w/o Indicator	w/Indicator						
8 x 31	0.5	400V	15009-G	-	20,000	10/100				
	1		15011-G	15211-G						
	2		15013-G	15213-G						
	4		15019-G	15219-G						
	6		15023-G	15223-G						
	8		15027-G	15227-G						
	10		15031-G	15231-G						
	12		15033-G	15233-G						
	16		15035-G	15235-G						
	20		15037-G	15237-G						
10 X 38	0.5	500V	16009-G	-	120,000	10/100				
	1		16011-G	-						
	2		16013-G	16213-G						
	4		16019-G	16219-G						
	6		16023-G	16223-G						
	8		16027-G	16227-G						
	10		16031-G	16231-G						
	12		16033-G	16233-G						
	16		16035-G	16235-G						
	20		16037-G	16237-G						
	25		16039-G	16239-G						
	32		16043-G	16243-G						
	14 X 51		1	690V			17011-G	-	80,000	10/50
			2				17013-G	17213-G		
4		17019-G	17219-G							
6		17023-G	17223-G							
8		17027-G	17227-G							
10		17031-G	17231-G							
12		17033-G	17233-G							
16		17035-G	17235-G							
20		17037-G	17237-G							
25		17039-G	17239-G							
32		17043-G	17243-G							
40		17047-G	17247-G							
50	17051-G	17251-G								
22 x 58	2	690V	18013-G	-	80,000	10/50				
	4		18019-G	18219-G						
	6		18023-G	18223-G						
	8		18027-G	18227-G						
	10		18031-G	18231-G						
	12		18033-G	18233-G						
	16		18035-G	18235-G						
	20		18037-G	18237-G						
	25		18039-G	18239-G						
	32		18043-G	18243-G						
	40		18047-G	18247-G						
	50		18051-G	18251-G						
	63		18055-G	18255-G						
	80		18059-G	18259-G						
	100		18063-G	18263-G						
	125		18065-G	18265-G						



Blown-Fuse Indicator



Dimensions

FUSE SIZE	A	B	C
8 x 31	8.5	31.5	6.3
10 x 38	10.3	38	10.5
14 x 51	14.3	51	13.8
22 x 58	22.2	58	16.2

gI-gG

CYLINDRICAL FUSE-LINKS



17447-G

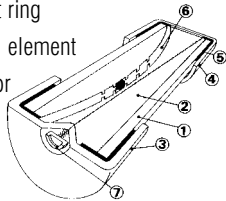


18447-G

Striker



- 1 Ceramic body
- 2 Sand
- 3 Indicator contact
- 4 Lower contact
- 5 Contact ring
- 6 Melting element
- 7 Indicator

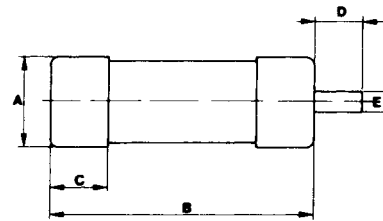


Catalog Numbers, Ratings — gI-gG with Striker

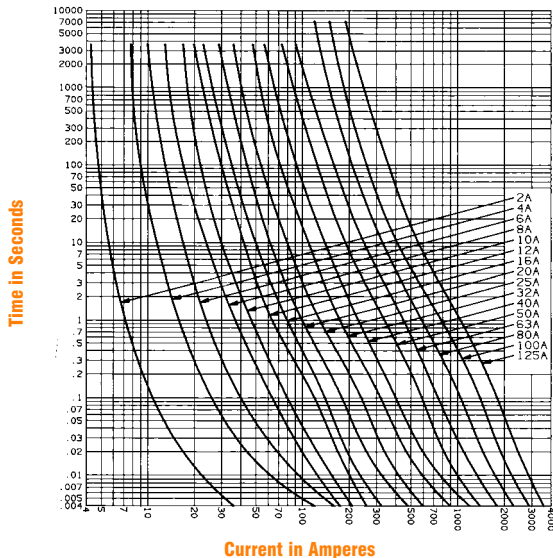
SIZE (mm x mm)	RATED CURRENT In (A)	RATED VOLTAGE	CATALOG NUMBER	INTERRUPTING RATING (A)	STANDARD PACK/CTN.
14 X 51	2	500V	17413-G	120,000	10/50
	4		17419-G		
	6		17423-G		
	8		17427-G		
	10		17431-G		
	12		17433-G		
	16		17435-G		
	20		17437-G		
	25		17439-G		
	32		17443-G		
	40		17447-G		
	50		17451-G		
22 X 58	4	690V	18419-G	80,000	10/50
	6		18423-G		
	8		18427-G		
	10		18431-G		
	12		18433-G		
	16		18435-G		
	20		18437-G		
	25		18439-G		
	32		18443-G		
	40		18447-G		
	50		18451-G		
	63		18455-G		
	80		18459-G		
	100		18463-G		
	125		18465-G		
		500V		120,000	
		400V			

Dimensions

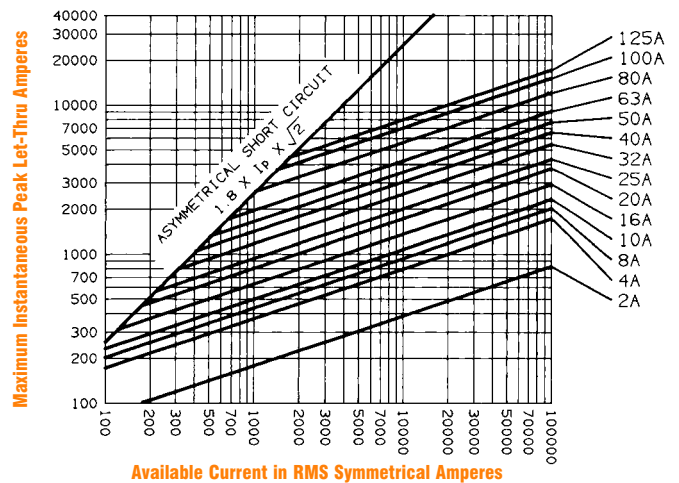
FUSE SIZE	A	B	C	D	E
14 x 51	14.3	51	13.8	7.5	3.8
22 x 58	22.2	58	16.2	7.5	3.8



Melting Time - Current Data — 2-125 Amperes



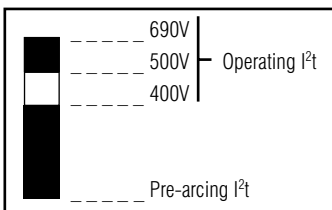
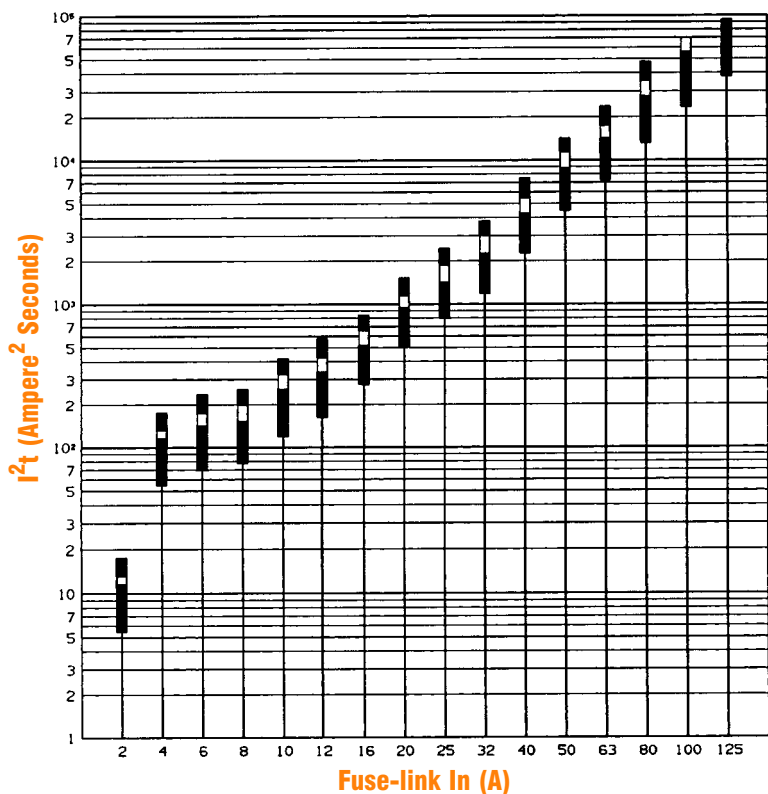
Peak Let-Thru Current Data — 2-125 Amperes



gI-gG

CYLINDRICAL FUSE-LINKS

I^2t Characteristics — Discrimination



Power Loss (Watts) at Rated Current In

RATED CURRENT (A)	SIZE		
	10 x 38	14 x 51	22 x 58
1	0.27 W		
2	0.4 W	0.5 W	
4	0.60 W	0.7 W	0.9 W
6	0.85 W	1.0 W	1.3 W
8	1.0 W	1.3 W	1.45 W
10	1.2 W	1.5 W	1.85 W
12	1.4 W	1.7 W	2.2 W
16	1.6 W	2.0 W	2.3 W
20	1.9 W	2.3 W	2.65 W
25	2.3 W	2.7 W	3.1 W
32	2.9 W	3.3 W	3.85 W
40		4 W	4.8 W
50		4.5 W	5.3 W
63			6.5 W
80			8 W
100			9 W
125			12.5 W

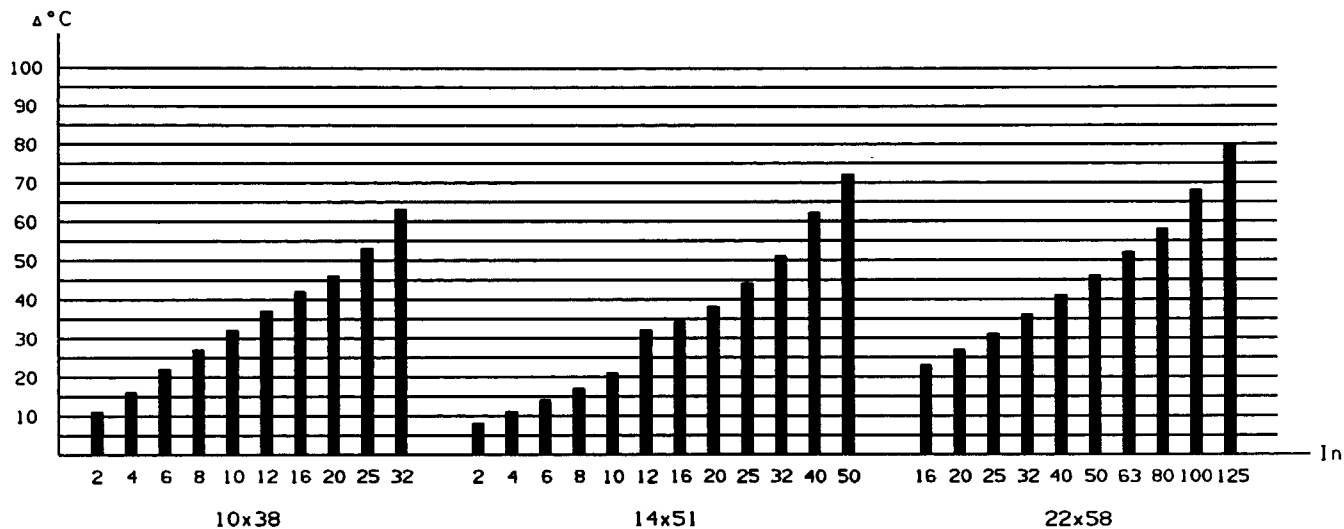
IEC 269-2	10 x 38	14 x 51	22 x 58
NFC 63210	25A	40A	100A
UBE 21103	3 W	5W	9.5 W

These values are much lower than those allowed by the standards.



Temperature

Temperature rise reached by gI-gG fuse-links at I_n , measured on their upper contact.



aM

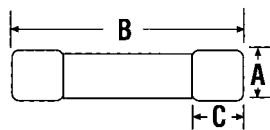
CYLINDRICAL FUSE-LINKS

Catalog Numbers, Ratings — aM (Optional Blown-Fuse Indicator)

SIZE (mm x mm)	RATED In CURRENT (A)	RATED VOLTAGE	CATALOG NUMBER		INTERRUPTING RATING (A)	STANDARD PACK/CTN.				
			w/o Indicator	w/Indicator						
8 x 31	1	400V	15511-G	-	20,000	10/100				
	2		15513-G	-						
	4		15519-G	-						
	6		15523-G	-						
	8		15527-G	-						
	10		15531-G	-						
10 X 38	0.16	500V	16503-G	-	120,000	10/100				
	0.25		16507-G	-						
	0.5		16509-G	-						
	1		16511-G	16711-G						
	2		16513-G	16713-G						
	4		16519-G	16719-G						
	6		16523-G	16723-G						
	8		16527-G	16727-G						
	10		16531-G	16731-G						
	12		16533-G	16733-G						
	16		16535-G	16735-G						
	20		16537-G	16737-G						
	25		16539-G	16739-G						
	32		16543-G	-						
14 X 51	0.25	690V	17507-G	-	80,000	10/50				
	0.5		17509-G	-						
	1		17511-G	17711-G						
	2		17513-G	17713-G						
	4		17519-G	17719-G						
	6		17523-G	17723-G						
	8		17527-G	17727-G						
	10		17531-G	17731-G						
	12		17533-G	17733-G						
	16		17535-G	17735-G						
	20		17537-G	17737-G						
	25		17539-G	17739-G						
	32		17543-G	17743-G						
	40		17547-G	17747-G						
	45		17549-G	17749-G						
	50		17551-G	17751-G						
	22 x 58		4	690V			18519-G	18719-G	80,000	10/50
			6				18523-G	18723-G		
8		18527-G	18727-G							
10		18531-G	18731-G							
12		18533-G	18733-G							
16		18535-G	18735-G							
20		18537-G	18737-G							
25		18539-G	18739-G							
32		18543-G	18743-G							
40		18547-G	18747-G							
50		18551-G	18751-G							
63		18555-G	18755-G							
80		18559-G	18759-G							
100		18563-G	18763-G							
125		18565-G	18765-G							
		500V				120,000				
		400V								



Blown-Fuse Indicator



Dimensions

FUSE SIZE	A	B	C
8 x 31	8.5	31.5	6.3
10 x 38	10.3	38	10.5
14 x 51	14.3	51	13.8
22 x 58	22.2	58	16.2

aM

CYLINDRICAL FUSE-LINKS

Catalog Numbers, Ratings — aM with Striker



17947-G



18951-G

Striker



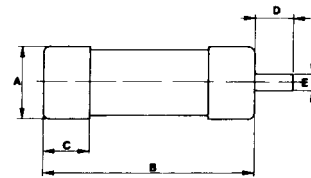
BEFORE

AFTER

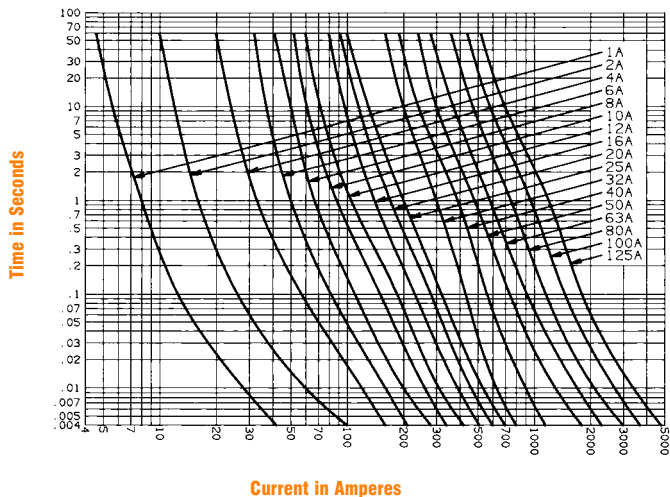
SIZE (mm x mm)	RATED In CURRENT (A)	RATED VOLTAGE	CATALOG NUMBER	INTERRUPTING RATING (A)	STANDARD PACK/CTN.
14 X 51	1	500V	17911-G	120,000	10/50
	2		17913-G		
	4		17919-G		
	6		17923-G		
	8		17927-G		
	10		17931-G		
	12		17933-G		
	16		17935-G		
	20		17937-G		
	25		17939-G		
	32		17943-G		
	40		17947-G		
	45		17949-G		
	50		17951-G		
22 X 58	4	690V	18919-G	80,000	10/50
	6		18923-G		
	8		18927-G		
	10		18931-G		
	12		18933-G		
	16		18935-G		
	20		18937-G		
	25		18939-G		
	32		18943-G		
	40		18947-G		
	50		18951-G		
	63		18955-G		
	80		18959-G		
	100		18963-G		
	125		18965-G		
			500V		
	400V				

Dimensions

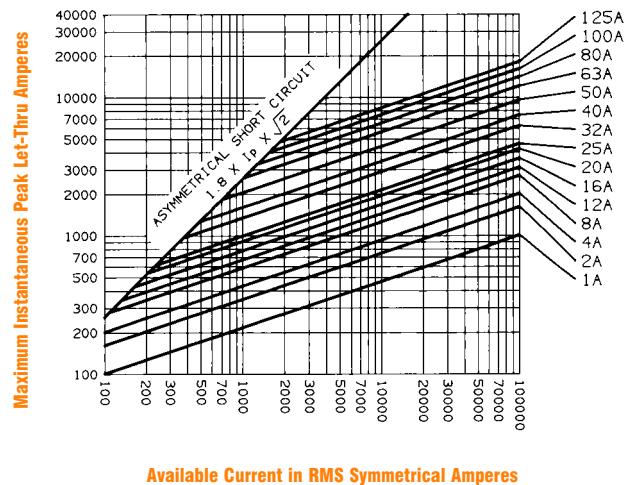
FUSE SIZE	A	B	C	D	E
14 x 51	14.3	51	13.8	7.5	3.8
22 x 58	22.2	58	16.2	7.5	3.8



Melting Time - Current Data — 1-125 Amperes



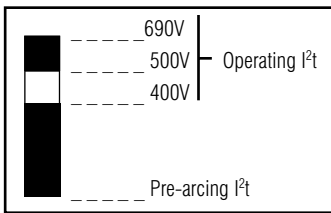
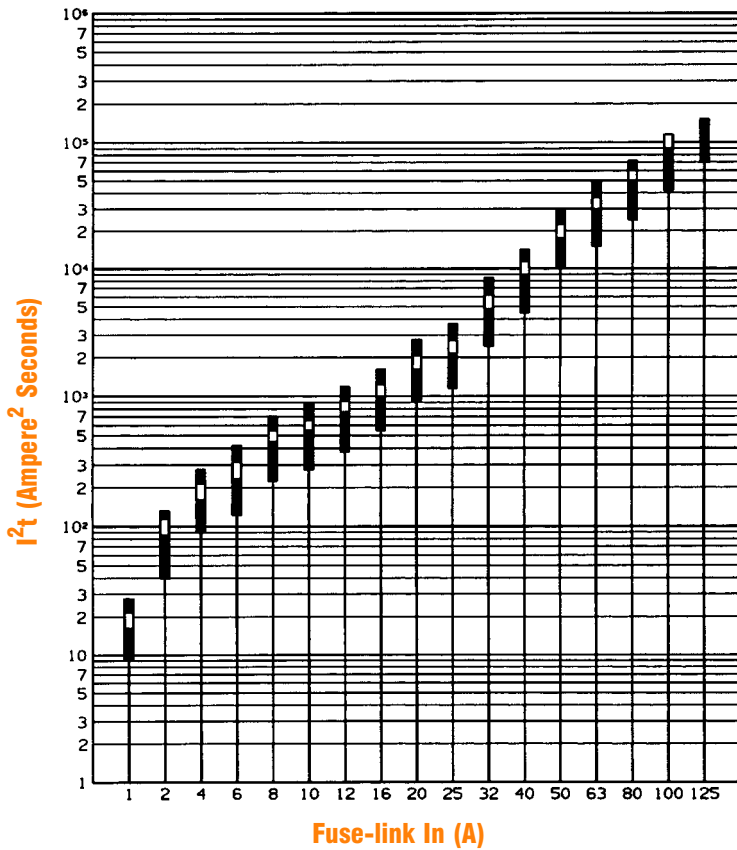
Peak Let-Through Current Data — 1-125 Amperes



aM

CYLINDRICAL FUSE-LINKS

I^2t Characteristics — Discrimination



Power Loss (Watts) at Rated Current I_n

RATED I_n CURRENT (A)	SIZE		
	10 x 38	14 x 51	22 x 58
1	0.1 W		
2	0.2 W	0.3 W	
4	0.3 W	0.4 W	0.5 W
6	0.4 W	0.5 W	0.6 W
8	0.5 W	0.6 W	0.8 W
10	0.6 W	0.8 W	1.0 W
12	0.7 W	1.0 W	1.2 W
16	0.8 W	1.2 W	1.5 W
20	1.2 W	1.5 W	1.8 W
25	1.6 W	1.9 W	2.0 W
32	2.0 W	2.3 W	2.6 W
40		2.6 W	3.2 W
50		2.9 W	3.9 W
63			4.7 W
80			5.9 W
100			6.5 W
125			9.5 W

IEC 269-2	10 x 38	14 x 51	22 x 58
NFC 63210	16 A	50 A	100 A
UNE 21103	1.2 W	3 W	7 W

These values are much lower than those allowed by the standards.

Temperature

Temperature rise reached by aM fuse-links at I_n , measured on their upper contact.

