

'CGS1000'

Fast Acting HRC Fuse Links

17/18

Type 'CGS1000' 400, 500 & 600 Amp

Fast acting fuse links, rated 400 - 600 Amp

A.C. rating: 600 Volt rms tested to

707 Volt rms.

D.C. rating: 400 Volt d.c. time constant 20ms.

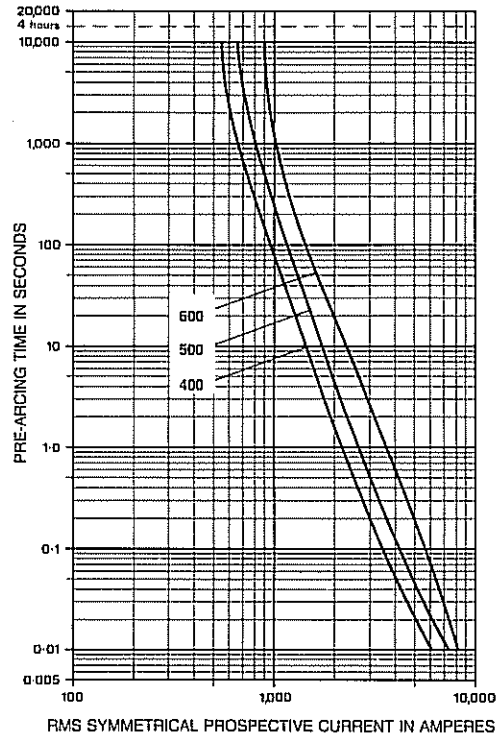
Specification and List Numbers

Voltage Rating		Current Rating	List Number	Minimum Pre-Arcing I ² t	Total I ² t	Cut-Off Current	Power Dissipation		Top Cap Temp. Rise	Dimensional Reference
Volt a.c. RMS	Volt d.c. @ 20ms	Amp		A ² sec	@ 100kA 600Volt RMS A ² sec	@ 100kA 600Volt RMS kA	@ In	@ 0.5 in	@ 20°C ambient °C	(Page 1/40)
ASTA Certified 600 also tested to 707		400	CGS1000/400	137,000	370,000	28.0	76.0	17.0	92	5
	400	500	CGS1000/500	248,000	740,000	33.0	84.0	16.0	92	
		600	CGS1000/600	390,000	150,000	44.0	91.0	17.0	93	

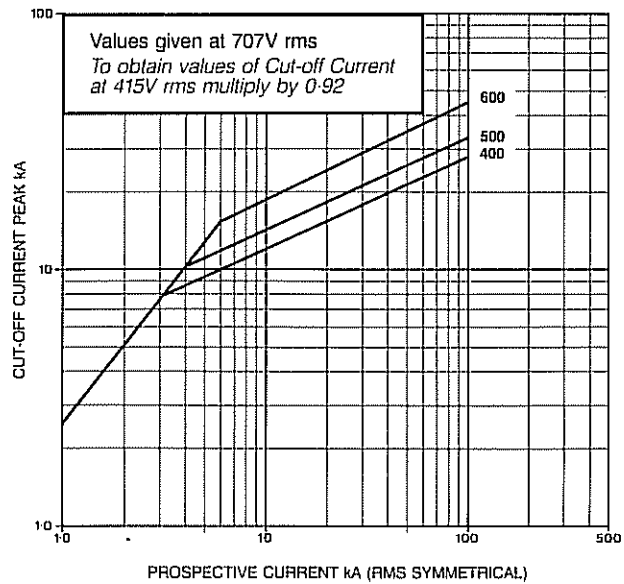
Note: Add-on indicator fuse link conversion kits are not available for this range of fuse links.
For indicated version order as CGIS 1000/-- --.

Characteristics

Type 'CGS1000'
Time/Current Characteristics
400-600 Amp



Type 'CGS1000'
Cut-off Current Characteristics
400-600 Amp

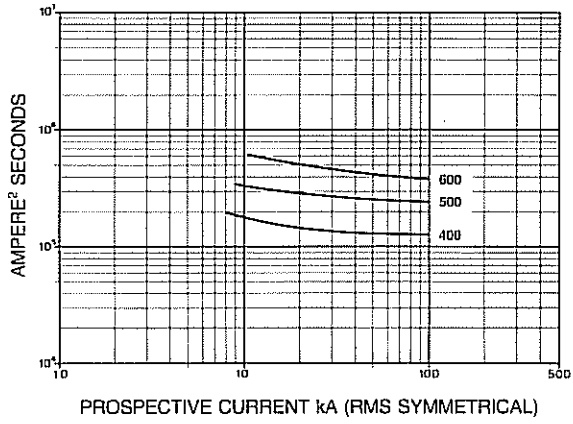


Type 'CGS1000'

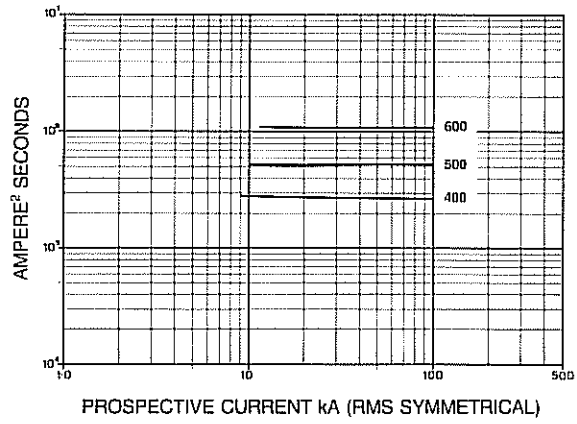
I^2t variations with prospective current



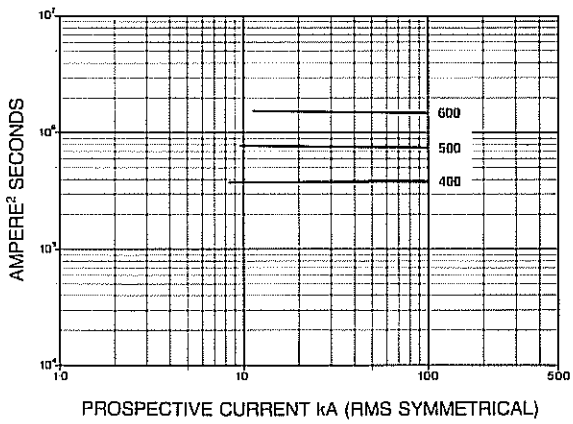
Pre-arcing



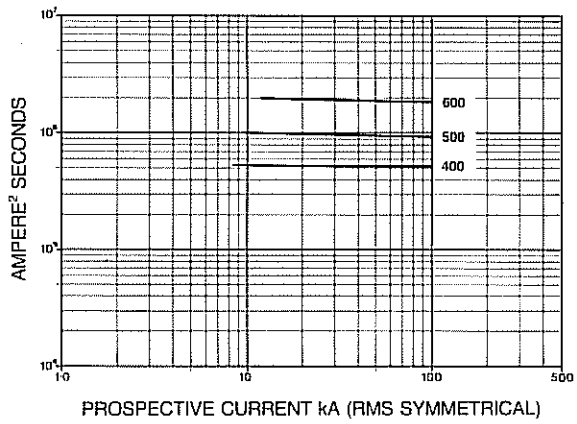
415 Volt RMS



600 Volt RMS

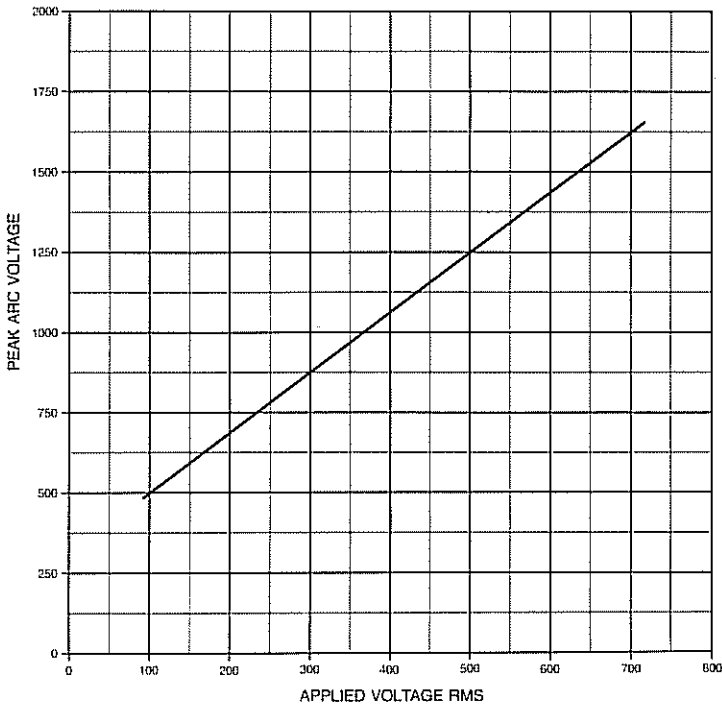


707 Volt RMS



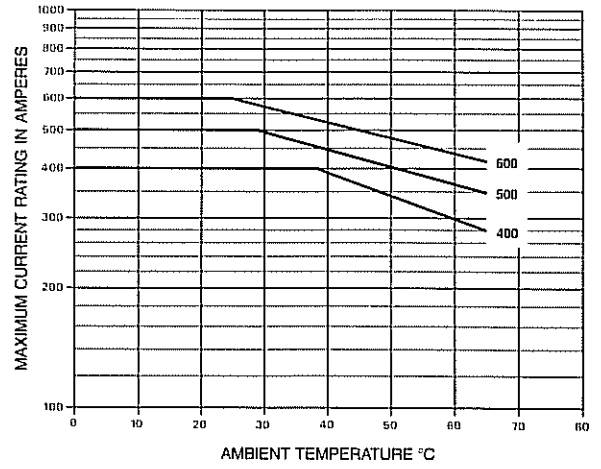
Type 'CGS1000'

Variation of arc voltage with applied voltage



Type 'CGS1000'

De-rating at high ambients



Type 'CGS1000'
Forced air cooling
up-rating curve

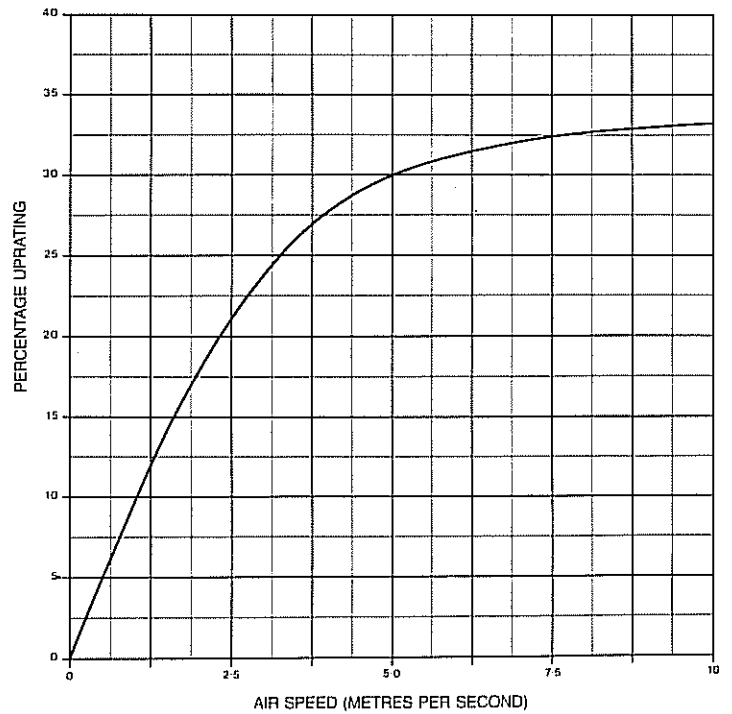


Figure 1

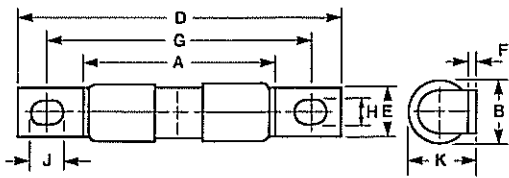


Figure 3

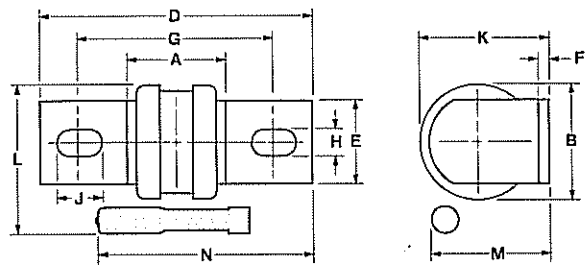


Figure 2

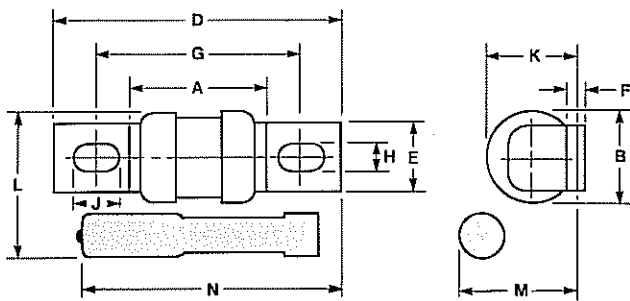


Figure 4

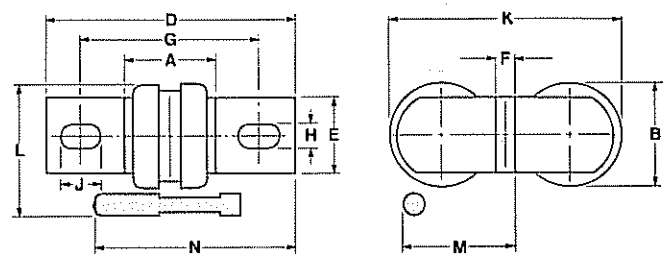
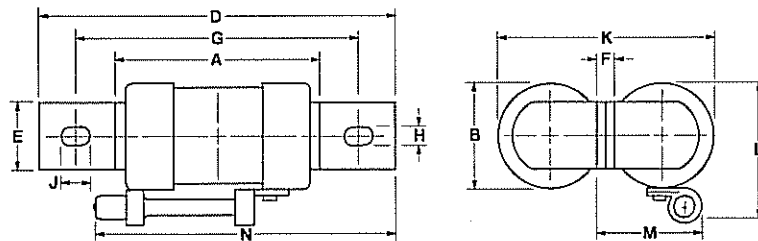


Figure 5



Type	Rating Amp	Fig. No.	Dimensions in millimetres												
			A max	B	D max	E	F	G	H	J	K	L	M	N	
GSA#	5-20	1	28.2	8.0	47.6	6.4	0.8	38.1	3.8	5.0	8.7	-	-	-	
GSA	25-100	2	29.2	17.3	58.4	12.7	1.6	41.8*	6.4	7.9	18.2	28.6	24.6	52.4	
	125-250	3	32.6	34.6	85	25.4	3.2	60.3	10.3	15.5	38.8	45.3	35.2	64.3	
	300-600	4	32.6	34.6	85	25.4	6.4	60.3	10.3	15.5	77.6	45.3	38.4	64.3	
GSD	125-150	2	29.2	17.3	58.4	12.7	1.6	41.8	6.4	7.9	18.2	28.6	24.6	52.4	
	300, 350	3	32.6	34.6	85	25.4	3.2	60.3	10.3	15.5	38.8	45.3	35.2	64.3	
	700	4	32.6	34.6	85	25.4	6.4	60.3	10.3	15.5	77.6	45.3	38.4	64.3	
GSB	5-20	1	55.0	8.0	74.6	6.4	0.8	65.0	3.8	5.0	8.7	-	-	-	
GSB	25-75	2	50.0	17.3	79.5	12.0	1.6	61.8*	6.4	7.9	18.2	28.6	24.6	70.4	
	100-250	3	55	34.6	107.0	25.4	3.2	81.7	10.3	15.5	38.8	45.3	35.2	84.1	
	300-500	4	55	34.6	107.0	25.4	6.4	81.7	10.3	15.5	77.6	45.3	38.4	84.1	
*CGS 1000 & CGIS 1000	400-600	5	77.8	40.5	136.5	25.4	6.4	110	10.3	15.5	83.3	49.6	35.0	113	

Note: Add-on indicator fuse link shown shaded.

* Add-on indicator fuse link conversion kits are not available for this range of fuse links. For indicated version order as CGIS 1000/-- --.

Indicator not available on this size.