

D Type (DIAZED)

FUSE-LINKS & SCREW CAP HOLDERS



500 VOLT D TYPE DIAZED FUSE-LINKS, SCREW CAPS AND FUSE BASES

Ferraz Shawmut D fuse-links, also called Diazed type, are 500 Volts AC rated with 75kA interrupting rating. They have 4 physical sizes, DI, DII, DIII, and DIV and fit into special screw caps. All fuse-links have blown-fuse indicators which are visible through the screw cap. Screw caps fit onto single pole bases which are screw or DIN rail mounted. All accessories such as covers, adapter rings, and gauge rings are described.

Ferraz Shawmut is also comprised of Lindner GmbH, a major supplier of D Type Diazed fuses. These fuses are now being sold to markets worldwide through the Ferraz Shawmut distribution network. For Lindner information please contact your local representative.

Ratings

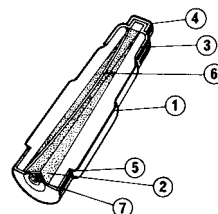
- **AC:** 500 Volts AC, 75kA interrupting rating
- **gL-gG** Performance Characteristic

Approvals

- Meet IEC, VDE and UNE Standards:
IEC 269-3, 3A
VDE 0636
UNE 21103
- Approved by Lloyd's Register of Shipping and Bureau Veritas

D FUSES — Catalog Numbers, Ratings

| SIZE | RATED In CURRENT (A) | CAP THREAD | CATALOG NUMBER | STANDARD PACK/CTN |
|------|----------------------|------------|----------------|-------------------|
| DI | 2 | E 16 | 28013-G | 50 |
| | 4 | | 28019-G | |
| | 6 | | 28023-G | |
| | 10 | | 28031-G | |
| | 16 | | 28035-G | |
| | 20 | | 28037-G | |
| | 25 | | 28040-G | |
| DII | 2 | E 27 | 28113-G | 5/25 |
| | 4 | | 28119-G | |
| | 6 | | 28123-G | |
| | 10 | | 28131-G | |
| | 16 | | 28135-G | |
| | 20 | | 28137-G | |
| | 25 | | 28139-G | |
| DIII | 35 | E 33 | 28145-G | 5/25 |
| | 50 | | 28151-G | |
| | 63 | | 28155-G | |
| DIV | 80 | R 1-1/4" | 28159-G | 5 |
| | 100 | R 1-1/4" | 28163-G | 5 |



- 1 Ceramic body
- 2 Sand
- 3 Upper contact
- 4 Contact top
- 5 Lower contact
- 6 Melting element
- 7 Indicator



28139-G



28159-G



28031-G

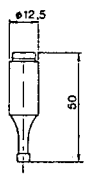


28113-G

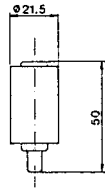
D Type (DIAZED)

FUSE-LINKS & SCREW CAP HOLDERS

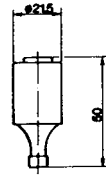
Dimensions



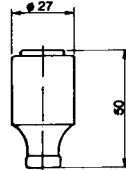
D I



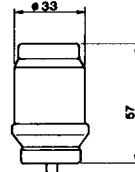
D II (2-6A)



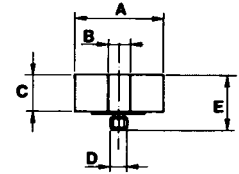
D II (10-25A)



D III



D IV



Gauge Ring

Gauge Ring Dimensions

| | SII | SIII | SIV |
|---|------|------|------|
| A | 23.5 | 29 | 14 |
| B | 7 | 7 | - |
| C | 12.5 | 12.5 | 13.5 |
| D | 5 | 5 | - |
| E | 17 | 17 | - |

Gauge Rings

| SIZE | RATED In CURRENT (A) | CAP THREAD | CATALOG NUMBER | STANDARD PACK |
|------|----------------------|------------|----------------|---------------|
| SII | 2 | E 27 | 27913-G | 50 |
| | 4 | | 27919-G | |
| | 6 | | 27923-G | |
| | 10 | | 27931-G | |
| | 16 | | 27935-G | |
| | 20 | | 27937-G | |
| SIII | 25 | 27939-G | 50 | |
| | 35 | 27945-G | | |
| | 50 | 27951-G | | |
| SIV | 63 | 27955-G | 50 | |
| | 80 | R 1-1/4" | | 27959-G |



27959-G



27935-G

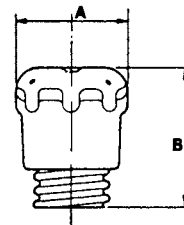


Screw Caps

| SIZE | RATED In CURRENT (A) | CAP THREAD | CATALOG NUMBER | STANDARD PACK |
|------|----------------------|------------|----------------|---------------|
| KII | 25 | E 27 | 28039-G | 50 |
| KIII | 63 | E 33 | 28055-G | 50 |
| KIV | 100 | R 1-1/4" | 28063-G | 24 |



28063-G



Dimensions

| | KII | KIII | KIV |
|---|------|------|-----|
| A | 38 | 48 | 63 |
| B | 43.5 | 44 | 53 |

Adapter Rings

| | | | | |
|------------|--|--|---------|----|
| DIII - DII | | | 28100-G | 24 |
|------------|--|--|---------|----|



28100-G

D Type (DIAZED)

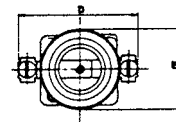
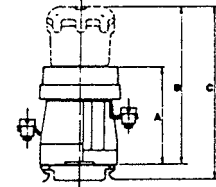
FUSE-LINKS & SCREW CAP HOLDERS



28202-G



28312-G



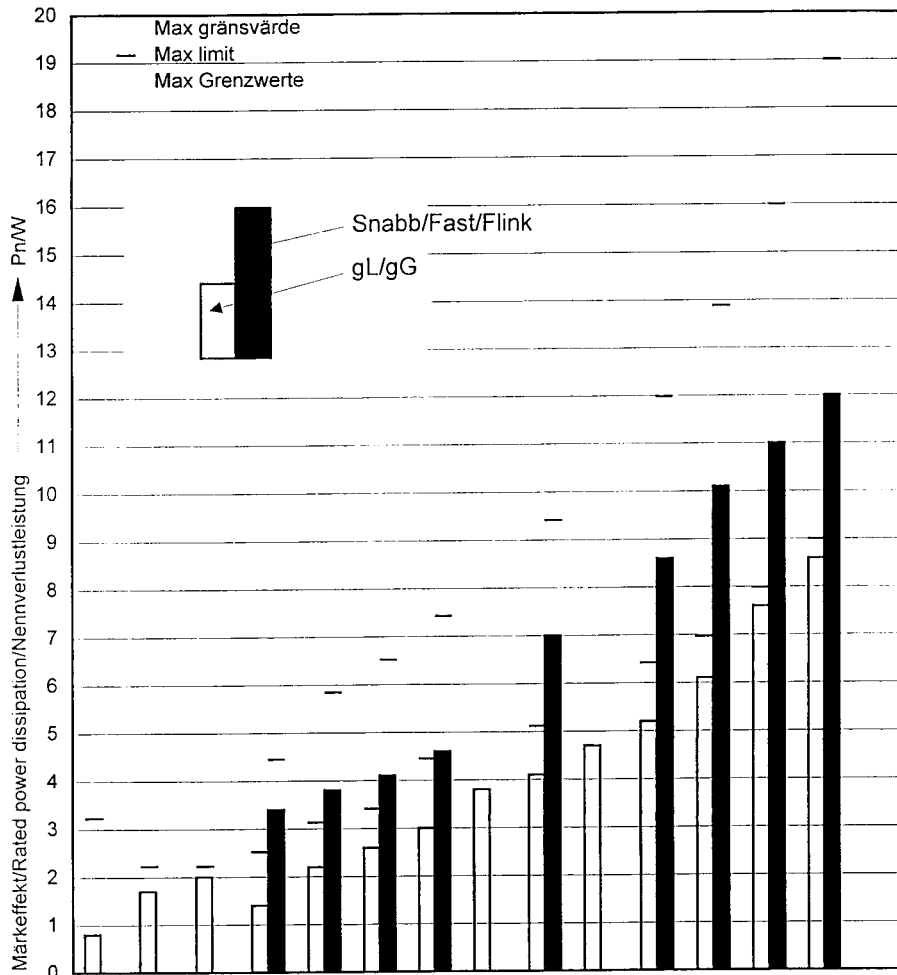
Single Pole Fuse Bases

| MOUNTING METHOD | SIZE | RATED In CURRENT (A) | CAP THREAD | CATALOG NUMBER | STANDARD PACK |
|-----------------|-------|----------------------|------------|----------------|---------------|
| SCREW | EZII | 25 | E 27 | 28202-G | 36 |
| | EZIII | 63 | E 33 | 28204-G | 36 |
| | EZIV | 100 | R 1-1/4" | 28206-G | 6 |

| | | | | | |
|----------|--------|----|------|---------|----|
| DIN RAIL | EZPII | 25 | E 27 | 28312-G | 24 |
| | EZPIII | 63 | E 33 | 28314-G | 24 |

Dimensions

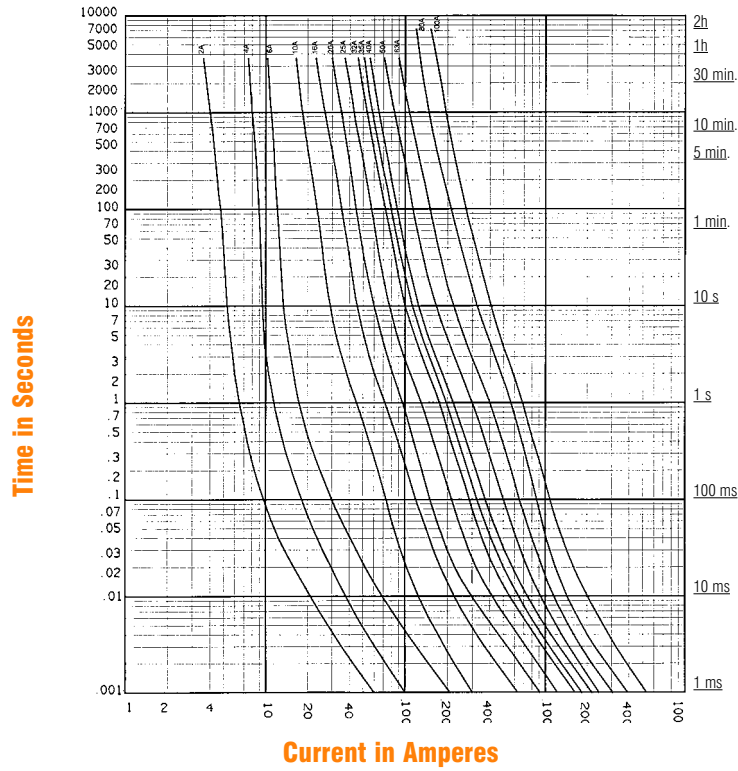
| | EZ II | EZ III | EZ IV | EZP II | EZP III |
|---|-------|--------|-------|--------|---------|
| A | 54 | 54 | 75 | 55 | 55 |
| B | 80 | 83 | 105 | 82 | 84 |
| C | 36 | 46 | 58 | 90 | 94 |
| D | 20 | 21 | 46 | 65 | 67 |
| E | 47 | 56 | 77 | 46 | 55 |
| F | 4.5 | 4.5 | 8 | - | - |
| G | 65 | 6 | 128 | - | - |



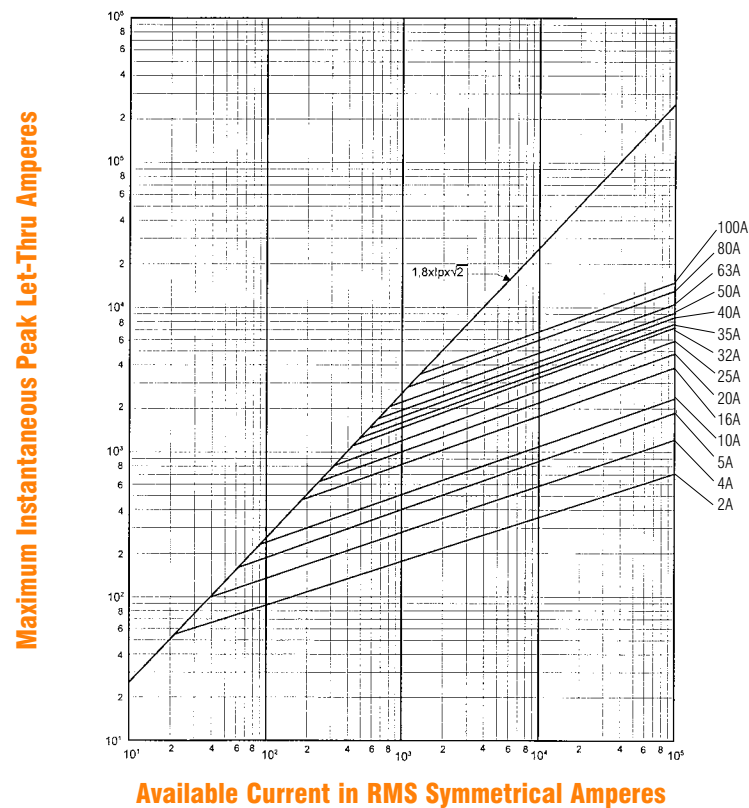
D Type (DIAZED)

FUSE-LINKS & SCREW CAP HOLDERS

Melting Time - Current Data — 2-100 Amperes



Peak Let-Through Current Data — 16-100 Amperes



D Type (DIAZED)

FUSE-LINKS & SCREW CAP HOLDERS

