



**B**

### DC RATED FOR TOUGH DC APPLICATIONS

The Tri-onic DC fuse series is designed for DC circuit protection in surface and underground mines. The TRS-RDC is MSHA approved and meets the industry's most severe third party requirements for 600VDC rated fuses.

The TRS-RDC is a time-delay fuse with essentially the same time-current characteristic as the standard Tri-onic.

#### Features/Benefits

- **DC rated** for mine duty and other long time-constant applications
- **Time delay** for motor start-ups and high inrush loads without nuisance opening
- **Rugged glass melamine body** for superior reliability in harsh environments

#### HIGHLIGHTS:

- Time Delay
- DC Rated

#### APPLICATIONS:

- Mine Circuits
- Trailing Cables
- Pump Motors
- Rail Heaters

#### Ratings

- **DC:** 1 to 30A  
300VDC, 20kA I.R.  
(Consult Factory for Availability)
- **DC:** 35 to 400A  
600VDC, 20kA I.R.

#### Approvals

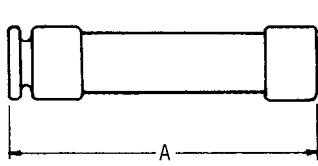
- MSHA Approval  
No. 28-26-0

# TIME DELAY / 600VDC FUSES

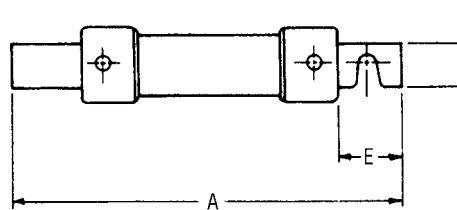
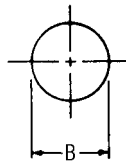
# TRS-RDC

## Standard Fuse Ampere Ratings, Catalog Numbers

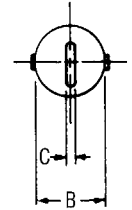
AMPERE RATING	CATALOG NUMBER	AMPERE RATING	CATALOG NUMBER	AMPERE RATING	CATALOG NUMBER	AMPERE RATING	CATALOG NUMBER	AMPERE RATING	CATALOG NUMBER
1	TRS1RDC	10	TRS10RDC	40	TRS40RDC	90	TRS90RDC	200	TRS200RDC
2	TRS2RDC	12	TRS12RDC	45	TRS45RDC	100	TRS100RDC	250	TRS250RDC
3	TRS3RDC	15	TRS15RDC	50	TRS50RDC	125	TRS125RDC	300	TRS300RDC
5	TRS5RDC	20	TRS20RDC	60	TRS60RDC	150	TRS150RDC	400	TRS400RDC
6	TRS6RDC	30	TRS30RDC	70	TRS70RDC	175	TRS175RDC		
8	TRS8RDC	35	TRS35RDC	80	TRS80RDC				



31-60 Amperes



61-400 Amperes



## Dimensions

AMPERE RATING	A		B		C		D		E	
	In.	mm	In.	mm	In.	mm	In.	mm	In.	mm
1-30	5	127	13/16	21	-	-	-	-	-	-
31-60	5-1/2	139	1-1/16	27	-	-	-	-	-	-
61-100	7-7/8	200	1-5/16	34	1/8	3	3/4	19	1	25
101-200	9-5/8	244	1-13/16	46	3/16	5	1-1/8	28	1-3/8	35
201-400	11-5/8	295	2-9/16	66	1/4	6	1-5/8	41	1-7/8	48

## TRS-RDC60 to 400

