

CLASS C

CANADIAN FUSES



CLASS C FUSES

Ferraz Shawmut Class C fuses have British standard (BS88) dimensions and are exact replacements for the British fuses and older HRCII-C fuses. Class C fuses are not dimensionally or electrically interchangeable with other North American fuses. They feature ceramic bodies and bolt-in mounting. They are for short-circuit protection only, in motor controllers, for example, where overload protection is provided by an overload relay.

* Ceramic version available upon request

HIGHLIGHTS:

- BS88 Dimensions
- Fast-Acting

APPLICATIONS:

- Short circuit and back-up protection of motor controllers and components

Ratings

- **AC:** 2 to 600A
600VAC, 200kA I.R.
- **DC:** 460V DC, 40kA I.R.
FES (2-60),
FESF (250-400),
FESC (250-400),
450V DC, 40kA I.R.

FESC (450-600)
350V DC, 40kA I.R.

FES (80-100),
FESC (80-200)

Approvals

- CSA Certified
HRCII-MISC

IEC269-2-1



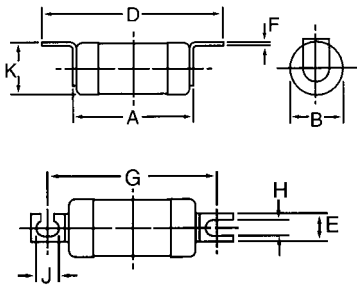
Class C Fuse Ampere Ratings, Catalog Numbers

AMPERE RATING	CATALOG NUMBER	AMPERE RATING	CATALOG NUMBER	AMPERE RATING	CATALOG NUMBER
2	FES2	80	FES80	250	FESF250
4	FES4	100	FES100	300	FESF300
6	FES6	125	FES125	350	FESF350
10	FES10			400	FESF400
15	FES15			250	FESC250
20	FES20	300	FESC300		
25	FES25	350	FESC350		
30	FES30	80	FESC80	400	FESC400
		100	FESC100		
40	FES40	125	FESC125	450	FESC450
50	FES50	150	FESC150	500	FESC500
60	FES60	200	FESC200	600	FESC600

CLASS C

CANADIAN FUSES

FES2-30
FES40-60
FES80-100
FES125-200



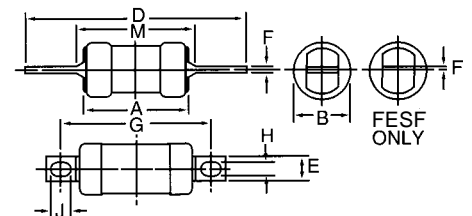
Dimensions

REFERENCE NO.	A	B	D	E	F	G	H	J	K	L	M
FES2, FES4, FES6, FES10, FES15, FES20, FESI25, FES30	2.22 (56.4)	0.94 (23.8)	3.38 (85.8)	0.34 (8.7)	0.05 (1.2)	2.88 (73.0)	0.20 (5.2)	0.28 (7.1)	0.94 (23.8)	-	-
FES40, FES50, FES60	2.28 (58.0)	1.03 (26.2)	3.56 (90.5)	0.50 (12.7)	0.05 (1.2)	2.88 (73.0)	0.20 (5.2)	0.28 (7.1)	1.09 (27.8)	-	-
FES80, FES100	2.75 (70.0)	1.38 (34.9)	4.38 (111.0)	0.75 (19.1)	0.09 (2.4)	3.69 (93.7)	0.34 (8.7)	0.41 (10.3)	1.38 (34.9)	-	-
FES125, FES150, FES200	2.75 (70.0)	1.38 (34.9)	4.38 (111.0)	0.75 (19.1)	0.09 (2.4)	3.69 (93.7)	0.34 (8.7)	0.41 (10.3)	1.38 (34.9)	-	-
FESC80, FESC100	2.75 (70.0)	1.38 (34.9)	5.38 (137.0)	0.75 (19.1)	0.13 (3.2)	4.38 (111.0)	0.34 (8.7)	0.47 (11.9)	-	-	3.13 (79.4)
FESC125, FESC150, FESC200	2.75 (70.0)	1.38 (34.9)	5.38 (137.0)	0.75 (19.1)	0.13 (3.2)	4.38 (111.0)	0.34 (8.7)	0.47 (11.9)	-	-	3.13 (79.4)
FESF250, FESF300, FESF350, FESF400	3.28 (83.3)	2.47 (61.1)	5.38 (137.0)	1.00 (25.4)	0.25 (6.3)	4.38 (111.0)	0.34 (8.7)	0.47 (11.9)	-	-	3.38 (85.8)
FESC250, FESC300, FESC350, FESC400	3.28 (83.3)	2.47 (61.1)	8.25 (210.0)	1.00 (25.4)	0.25 (6.3)	5.25 (133.0)	0.41 (10.3)	0.47 (11.9)	-	1.0 (2.54)	3.75 (95.0)
FESC450, FESC500, FESC600	3.22 (81.8)	3.00 (76.2)	8.25 (210.0)	1.00 (25.4)	0.25 (6.3)	5.25 (133.0)	0.41 (10.3)	0.47 (11.9)	-	1.00 (25.4)	3.75 (95.0)

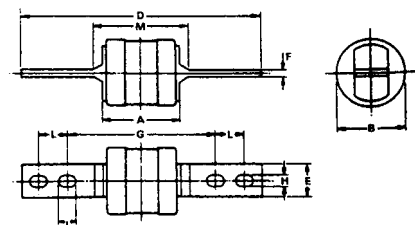
I²t Data at 200kA

FUSE AMPERE RATING	3-PHASE I ² t Data	
	PRE-ARC (A ² s)	@ 600V (A ² s)
2	2.3	6.6
4	7.0	20
6	22	70
10	100	310
15	260	750
20	540	1300
25	820	2000
30	2800	6200
40	4000	10 x 10 ³
50	6400	16
60	12 x 10 ³	28
80	14	44
100	17	62
125	25	93
150	62	170
200	90	280
250	200	600
300	300	900
350	500	1600
400	630	2100
450	800	2500
500	1200	3200
600	2000	5200

FESC80-100
FESC125-200
FESF250-400



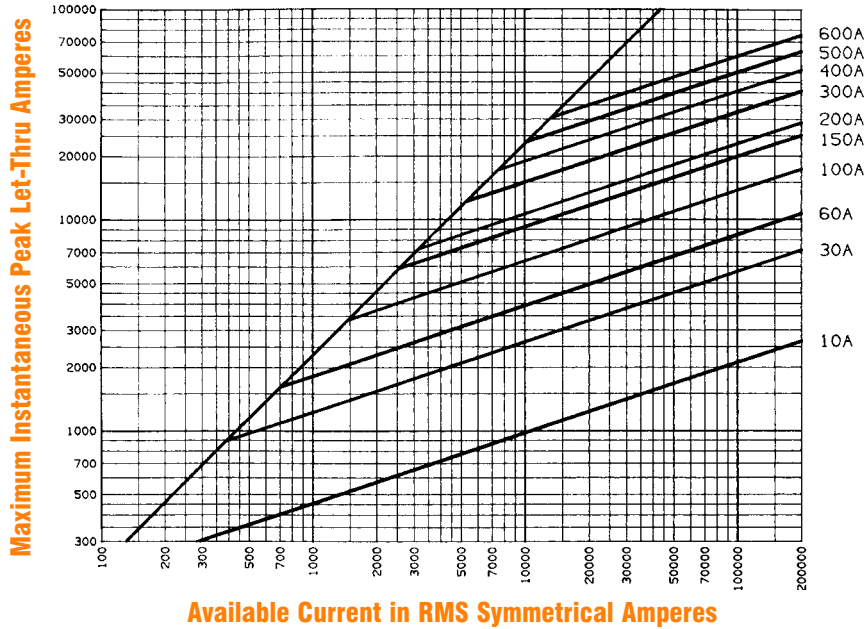
FESC250-400
FESC450-600



CLASS C

CANADIAN FUSES

Peak Let-Through Current Data — Class C Fuses, 10 to 600A, 600Volts AC



Melting Time - Current Data — Class C Fuses, 2 to 600A, 600Volts AC

