

# CAPACITOR

## FUSES/SPECIAL PURPOSE



As a complement to the wide variety of fuse lines developed by Ferraz Shawmut for every market and application type, we also offer a line of capacitor fuses ranging from 600 VAC to 5500 VAC.

The Ferraz Shawmut capacitor fuse range offers many models with the same electrical ratings but with various blade, studs, or end-contact designs in order to satisfy specific customer needs.

### Ratings

- 600VAC to 5500VAC
- 6A to 300A

### Features/Benefits

- Cartridge type
- Full range operation
- Indicator for most types
- Direct mounting on capacitor
- Prevent rupture of failed capacitor
- Special mounting brackets available

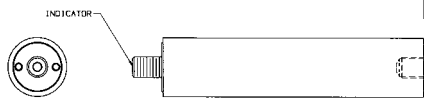
### Ratings Table

Ampere Rating	Voltage Rating Range					
	600V	1500V	2400V	3000V	4300V	5500V
6 to 25 Amps	•				•	•
30 to 50 Amps	•			•	•	•
60 to 95 Amps	•	•	•	•	•	•
100 to 150 Amps	•	•	•	•	•	
160 to 300 Amps	•	•	•	•		



### Mounting Configurations

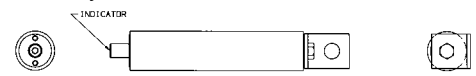
Please consult factory for mounting configurations availability



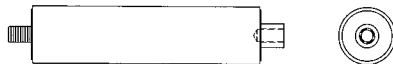
**Type 10 - Inner thread to Screw**



**Type 30 - External female to Bolt (L bracket)**



**Type 50 - Screw to Bolt (L bracket)**



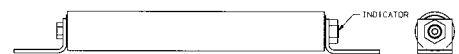
**Type 15 - External female to Bolt**



**Type 60 - Bolt (L bracket) to Bolt (L bracket)**



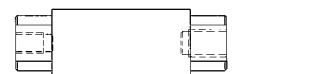
**Type 40 - External female to External female**



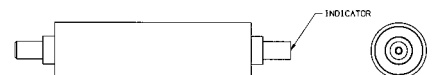
**Type 60 - Bolt (L bracket) to Bolt (L bracket)**



**Type 20 - Screw to Bolt (Flat Bracket)**



**Type 121 - External female to External female**



**Type 70 - Tube to Tube**