

URR/URGL/URU/URGM SEMICONDUCTOR PROTECTION FUSES



PROTISTOR® FUSES

660V

URR/URGL/URU/URGM from 75 to 800A

SIZES: 36 X 55 & 2 X 36 X 55

Features/Benefits

- **Extremely high Interrupting rating Fuses:**
Protection of power Semiconductors according to IEC 269.1 and 4
- **660V Voltage Rating** according to IEC 33
- **gR Class** Ratings from 75 to 800A according to VDE 636-23 and IEC 269.4
- **Three Models** complying with BS 88-4
 - without indicator
 - with external trip-indicator
 - with built in trip-indicator



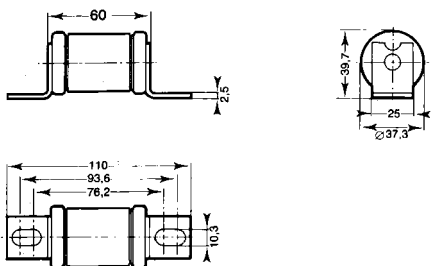
APPLICATIONS DATA

Voltage rating U_N (V)	Size	Class	Current rating I_N (A)	Melting $I^2t @ 1\text{ ms}$ I^2t_p (A ^{2s})	Total clearing $I^2t @ U_N$ A ^{2s}		Watt losses		Tested interrupting rating
					$I_p \leq 50 I_N$	$I_p > 50 I_N$	0.8 I_N	I_N	
660 V	36x55	URR	75	350	1800	2000	9.7	19.5	200 kA @ 660 V
			110	1180	6000	6700	11.3	22.8	
			200	3900	18500	20500	21.8	41.4	
			250	8760	41000	46000	23.6	44.1	
		URGL	50	180	860	990	7.3	14.0	200 kA @ 660 V
			65	335	1600	1840	8.8	17.1	
			85	480	3450	4000	12.2	23.5	
			90	720	4100	4700	13.2	25.5	
			150	2880	12600	14500	18.9	35.3	
			180	5350	22500	25500	19.1	35.7	
			200	9510	40000	46000	17.7	33.1	
			250	21400	97000	110000	18.7	34.5	
	280	29100	125000	145000	20.3	38.0			
	315	38100	157000	180000	22.7	42.6			
	355	48200	190000	215000	25.9	48.5			
	400	72000	265000	305000	26.7	50.0			
	2x36x55	URU	200	4700	24000	27000	18.4	33.0	200 kA @ 660 V
			235	6920	34500	39000	21.0	37.6	
			400	21200	100000	110000	34.8	62.3	
			500	35000	164000	184000	47.2	88.2	
		630	97300	515000	575000	41.1	73.2		
		URGM	175	2880	13800	16000	24.7	47.6	200 kA @ 660 V
	300		13700	60000	68000	31.5	59.0		
	325		21400	90000	102000	30.0	54.0		
355	25200		106000	120000	33.1	62.0			
450	65600		300000	340000	34.6	63.8			
500	85600		390000	440000	37.4	69.0			
630	152000		630000	720000	45.4	85.2			
710	193000		760000	860000	51.8	97.0			
800	282000	1.06 10 ⁶	1.22 10 ⁶	53.4	100.0				

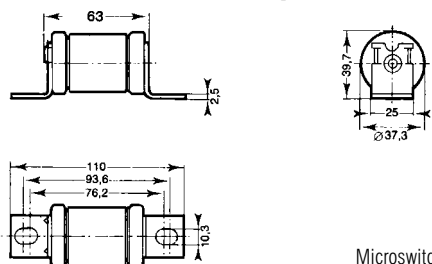
URR/URGL/URU/URGM SEMICONDUCTOR PROTECTION FUSES

PART NUMBERS

CP 36x55 - Without trip-indicator

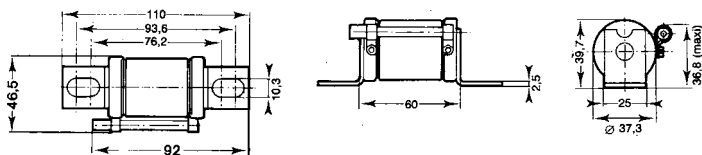


CP 36x55 - With built-in trip-indicator



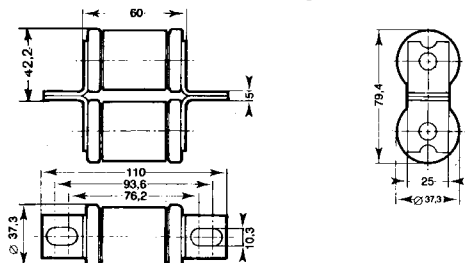
Microswitch MC 36 GR 2.5 N - Ref. P 092496

CP 36x55 - With separated trip-indicator

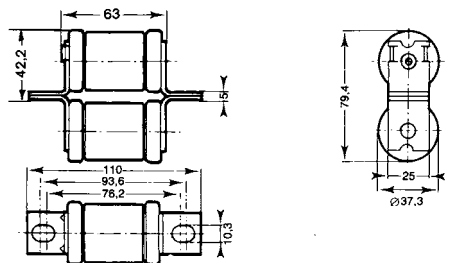


Microswitch MC 6.3 GR 2.5 N - Ref. Y 310015

CP 2x36x55 - Without trip-indicator



CP 2x36x55 - With built in trip-indicator



Microswitch MC 36 GR 2.5 N - Ref. P 092496

	Catalogue #	Reference #
36X55	6.6URGL36/50	X097103C
	6.6URGL36/65	H097113C
	6.6URR36/75	H097136C
	6.6URGL36/85	M097163C
	6.6URGL36/90	N097164C
	6.6URR36/110	P097165C
	6.6URGL36/150	Q097166C
	6.6URGL36/180	R097167C
	6.6URR36/200	S097168F
	6.6URGL36/200	S097168C
	6.6URR36/250	T097169C
	6.6URGL36/250	V097170C
	6.6URGL36/280	W097171C
6.6URGL36/315	B097176C	
6.6URGL36/355	C097177C	
6.6URGL36/400	D097178C	

	Catalogue #	Reference #
36X55	6.6URGL36T50	N097210C
	6.6URGL36T65	K097230C
	6.6URR36T75	H099965C
	6.6URGL36T85	M097255C
	6.6URGL36T90	N097256C
	6.6URR36T110	R099973C
	6.6URGL36T150	Z082178C
	6.6URGL36T180	P097257C
	6.6URR36T200	A085560C
	6.6URGL36T200	R097259C
	6.6URR36T250	W097263C
	6.6URGL36T250	X097264C
	6.6URGL36T280	Y097265C
6.6URGL36T315	Z097266C	
6.6URGL36T355	A097267C	
6.6URGL36T400	C097269C	

	Catalogue #	Reference #
36X55	6.6URGL36P90	H097182C
	6.6URR36P110	J097183C
	6.6URGL36P150	K097184C
	6.6URGL36P180	L097185C
	6.6URR36P200	M097186C
	6.6URGL36P200	N097187C
	6.6URR36P250	P097188C
	6.6URGL36P250	Q097189C
	6.6URGL36P280	R097190C
	6.6URGL36P315	V097193C
	6.6URGL36P355	Y097196C
	6.6URGL36P400	M097209C

	Catalogue #	Reference #
2X36X55	6.6URGM236/175	D097270C
	6.6URU236/200	F097272C
	6.6URU236/235	J097275C
	6.6URGM236/300	K097276C
	6.6URGM236/325	R097282C
	6.6URGM236/355	S097283C
	6.6URU236/400	T097284C
	6.6URGM236/450	Y097288C
	6.6URGM236/500	Z097289C
	6.6URU236/500	A097290C
	6.6URGM236/630	B097291C
	6.6URU236/630	R097351C
	6.6URGM236/710	S097352C
6.6URGM236/800	Y097357C	

	Catalogue #	Reference #
2X36 X55	6.6URGM236T175	F097456C
	6.6URU236T200	G097457C
	6.6URU236T235	A082179C
	6.6URGM236T300	S085533C
	6.6URGM236T325	J097459C
	6.6URGM236T355	N097463C
	6.6URU236T400	P097464C
	6.6URGM236T450	Q097465C
	6.6URGM236T500	R097466C
	6.6URU236T500	S097467C
	6.6URGM236T630	V097469C
	6.6URU236T630	W097470C
	6.6URGM236T710	C097476C
6.6URGM236T800	D097477C	