

**PROTISTOR® FUSES****250V****URGG/URGH from 50 to 1050A****SIZES: 36 X 27 - 2 X 36 X 27****Features/Benefits**

- **Extremely high Interrupting rating Fuses:**
Protection of power Semiconductors according to IEC 269.1 and 4
- **250V Voltage Rating** according to IEC 33
- **gR Class** (Ratings from 50 to 350A URGG - 300 to 700A URGH) according to VDE 636-23 and IEC 269.4
- **aR Class** (Ratings from 400 to 525A URGG - 800 to 1050A URGH) according to VDE 636-23 and IEC 269.4
- Two models complying with BS 88-4
 - without indicator
 - with external trip-indicator

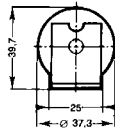
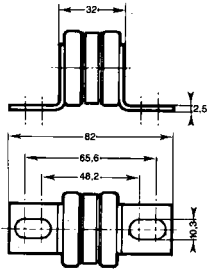
APPLICATIONS DATA

Voltage rating U_N (V)	Sizes	Class	Current rating I_N (A)	Melting $I_2^t @ 1 \text{ ms}$ $I_2^t_p$ (A ^{2s})	Total clearing $I_2^t @ U_N$ A ^{2s}	Watt losses		Tested interrupting rating
						0.8 I_N	I_N	
250 V	36x27	URGG	50	120	500	4.75	9.5	100 kA @ 250 V
			75	330	1380	6.3	12.6	
			100	745	3060	7.8	15.7	
			125	1340	5500	9.1	18.2	
			150	1930	7950	10.8	21.6	
			200	4020	16400	13.5	27.0	
			250	5350	30000	16.3	32.6	
			300	7290	49600	18.6	37.2	
			350	18000	74000	21	42.0	
			400	25100	128000	23.4	46.7	
	450	33500	170000	27.1	54.1			
	500	43000	219000	30.4	60.8			
	525	48200	245000	33.2	66.4			
	2x36x27	URGH	300	7700	31800	21.6	43.2	100 kA @ 250 V
			350	11500	48700	24.3	48.6	
			400	16000	65600	27	54.0	
			500	29100	120000	32.6	65.2	
			600	48200	198500	37.2	74.4	
			700	72000	276000	42.0	84.0	
			800	100000	512000	46.7	93.4	
900			134000	680000	54.1	108.2		
1000			172000	876000	60.8	121.6		
1050			193000	980000	66.4	132.8		

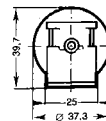
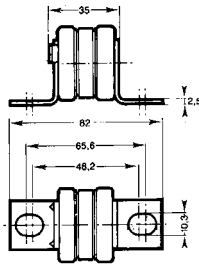
Minimum operating voltage for all trip indicators = 20V

PART NUMBERS

CP 36x27 - Without trip-indicator

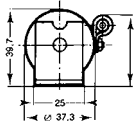
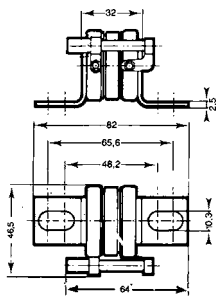


CP 36x27 - With built-in trip-indicator



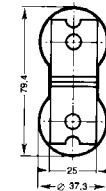
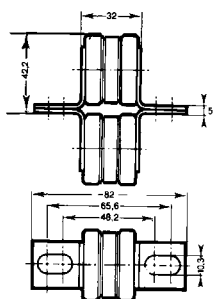
Microswitch MC 36 GR 2.5 N - Ref. P 092496

CP 36x27 - With separated trip-indicator

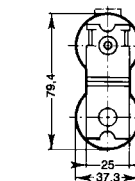
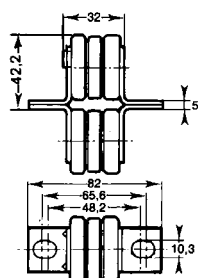


Microswitch MC 6.3 GR 2.5 N - Ref. Y 310005

CP 2x36x27 - Without trip-indicator



CP 2x36x27 - With built-in trip-indicator



Microswitch MC 36 GR 2.5 N - Ref. P 092496

36X27	Catalogue #	Reference #
	2.SURGG36/50	J080945C
	2.SURGG36/75	K080946
	2.SURGG36/100	L080947C
	2.SURGG36/125	R082470C
	2.SURGG36/150	Q082469C
	2.SURGG36/200	P082468C
	2.SURGG36/250	N082467C
	2.SURGG36/300	M082466C
	2.SURGG36/350	L082465C
	2.SURGG36/400	G075538C
2.SURGG36/450	H075539C	
2.SURGG36/500	J075540C	
2.SURGG36/525	K075541C	

36X27	Catalogue #	Reference #
	2.SURGG36T50	F080942C
	2.SURGG36T75	G080943C
	2.SURGG36T100	H080944C
	2.SURGG36T125	W082382C
	2.SURGG36T150	V082381C
	2.SURGG36T200	T082380C
	2.SURGG36T250	S082379C
	2.SURGG36T300	R082378C
	2.SURGG36T350	Q082377C
	2.SURGG36T400	L075542C
	2.SURGG36T450	M075543C
	2.SURGG36T500	N075544C
2.SURGG36T525	P075545C	

36X27	Catalogue #	Reference #
	2.SURGG36P50	C080939C
	2.SURGG36P75	D080940C
	2.SURGG36P100	E080941C
	2.SURGG36P125	Y081004C
	2.SURGG36P150	X081003C
	2.SURGG36P200	W081002C
	2.SURGG36P250	V081001C
	2.SURGG36P300	T081000C
	2.SURGG36P350	S080999C
	2.SURGG36P400	W075504C
	2.SURGG36P450	V075505C
	2.SURGG36P500	X075506C
	2.SURGG36P525	Y075507C

2X36X27	Catalogue #	Reference #
	2.5URGH236/300	K082464C
	2.5URGH236/350	J082463C
	2.5URGH236/400	H082462C
	2.5URGH236/500	G082461C
	2.5URGH236/600	F082460C
	2.5URGH236/700	E082459C
	2.5URGH236/800	Q075546C
	2.5URGH236/900	R075547C
	2.5URGH236/1000	S075548C
2.5URGH236/1050	T075549C	

2X36X27	Catalogue #	Reference #
	2.5URGH236T300	P082376C
	2.5URGH236T350	N082375C
	2.5URGH236T400	M082374C
	2.5URGH236T500	L082373C
	2.5URGH236T600	K082372C
	2.5URGH236T700	J082371C
	2.5URGH236T800	V075550C
	2.5URGH236T900	R075501C
	2.5URGH236T1000	S075502C
2.5URGH236T1050	T075503C	

