

# A4BX

## WELDER PROTECTORS/SPECIAL PURPOSE



### WELDER PROTECTORS

Ferraz Shawmut Welder Protectors are special purpose limiters used to provide isolation of faulted welding equipment and protection for the cable drop supplying the welder. Welder Protectors have a high thermal capacity and are less affected by high ambient temperatures and extended weld times than similar size Class J, K, or R fuses\*. Welder Protectors should only be applied for isolation of short circuited welding circuits. Overload protection must be provided for by other means.

\*Contact factory for Class L sizes and ratings.

#### Ratings

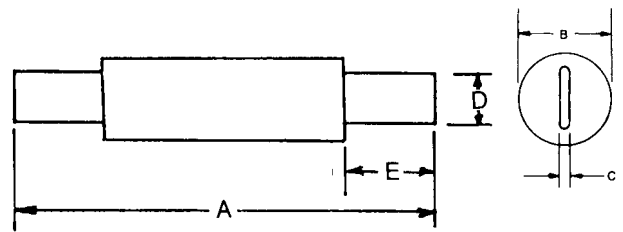
- 600VAC, 200kA I.R.

#### Approvals

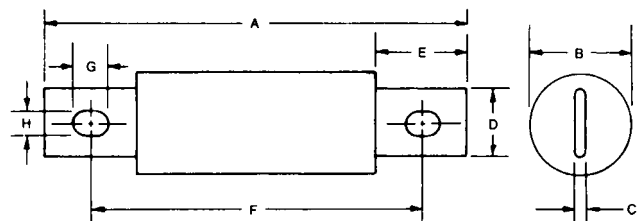
- Ferraz Shawmut Certified

### Standard Fuse Ampere Ratings, Catalog Numbers

AMPERE RATING	CATLOG NUMBER	
	CLASS K DIMENSION	CLASS J DIMENSION
100	A4BX100-150	-
125	A4BX125-150	-
150	A4BX150-150	-
200	A4BX200-150	A4BX200-150J
225	A4BX225-150	-
300	A4BX300-150	A4BX300-150J
400	A4BX400-150	A4BX400-150J
500	A4BX500-150	-
600	A4BX600-150	-



CLASS K



CLASS J

### A4BX ( ) - 150; Class K Dimensions

AMPERE RATING	INCHES							
	A	B	C	D	E	F	G	H
100	7-7/8	1	1/8	23/32	2-5/8	-	-	-
125-200	9-5/8	1-1/2	3/16	1-1/8	3-7/16	-	-	-
225-400	11-5/8	2	1/4	1-5/8	4-7/16	-	-	-
500-600	13-3/8	2-1/2	1/4	2	5-5/16	-	-	-

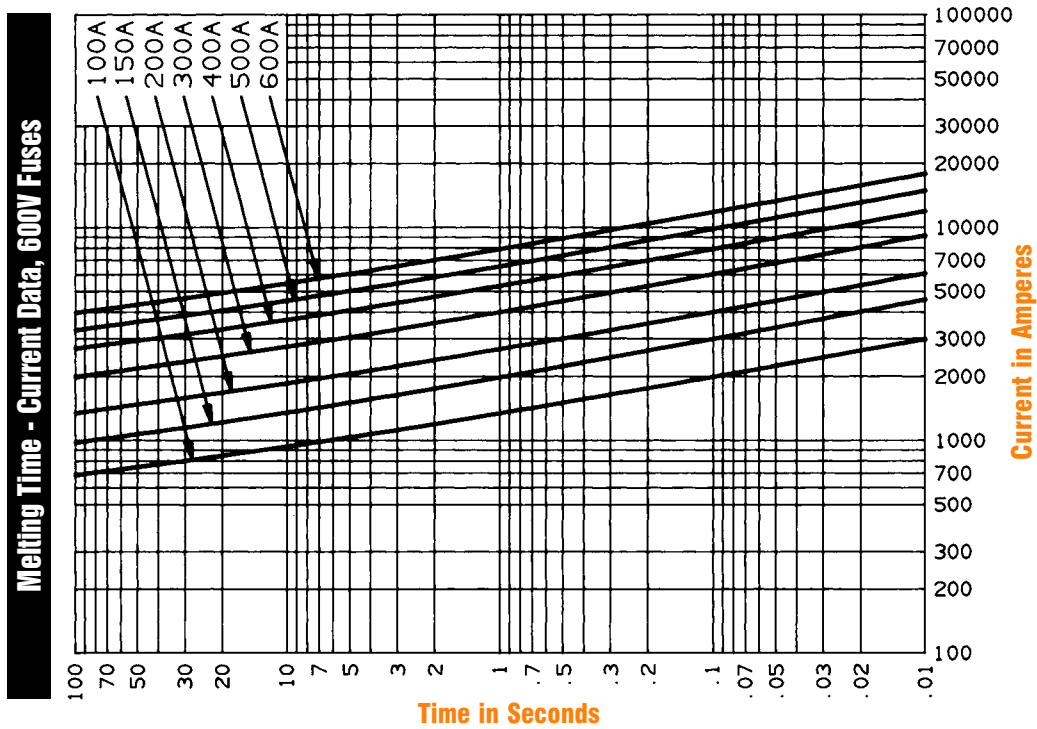
### A4BX ( ) - 150J; Class J Dimensions

125-200	5-3/4	1-1/2	3/16	1-1/8	1-1/2	4-3/8	3/8	9/32
225-400	7-1/8	2	1/4	1-5/8	2-3/16	5-1/4	17/32	13/32

# A4BX

## WELDER PROTECTORS/SPECIAL PURPOSE

A4BX100 to 600 Types 150, 150J



Peak Let-Thru Current Data — A4BX100 to 600, 600 Volts AC

