

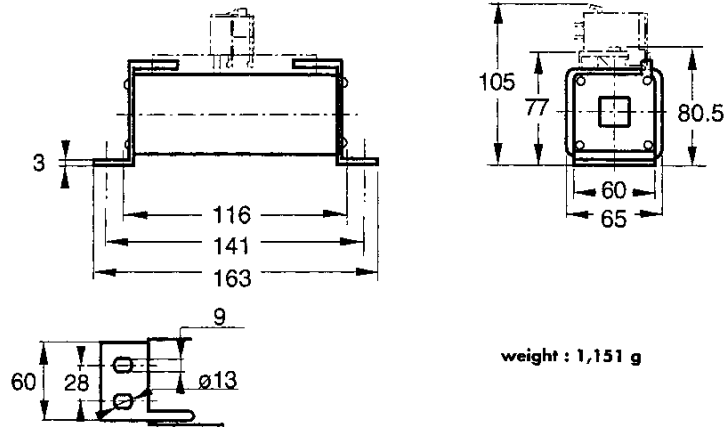
1200V DC

SQUARE-BODY/SPECIAL PURPOSE



1200 V DC
SRG from 160 to 420 A
Size 72

➤ **Dimensions**



weight : 1,151 g



MAIN CHARACTERISTICS

SIZE	CURRENT RATING I_N (A)	INTERRUPTING RATING	MAXIMUM I^2t @1000V=		WATTS LOSS		CATALOG NUMBER (1)	REF. NUMBER
			L/R=15ms	L/R=45ms	0.8 I_N	I_N		
72	160	@ 1200VDC = 100kA L/R = 15ms	12000	20000	41	77.5	CC12SRG72QF0160	K079428
	200		21000	36000	48	88	CC12SRG72QF0200	L079429
	250		45500	78500	57	96	CC12SRG72QF0250	M079430
	315		90000	154000	60	110	CC12SRG72QF0315	N079431
	400		182000	314000	66	129	CC12SRG72QF0400	P079432
	420		220000	380000	67	131	CC12SRG72QF0420	Q079433

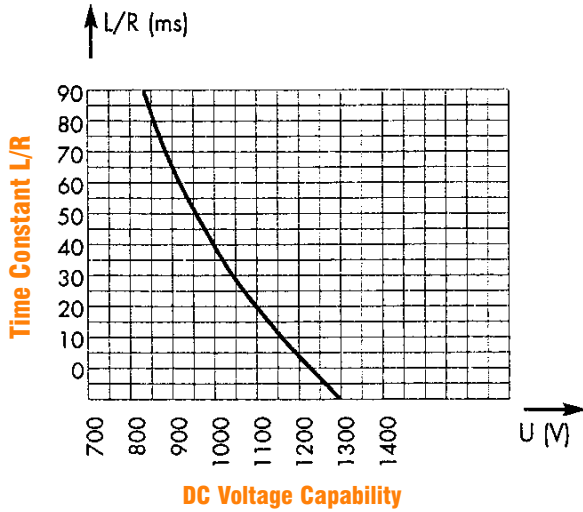
Microswitch: MC 3E 1-5N Ref. Number: D310020

1200V DC

SQUARE-BODY/SPECIAL PURPOSE

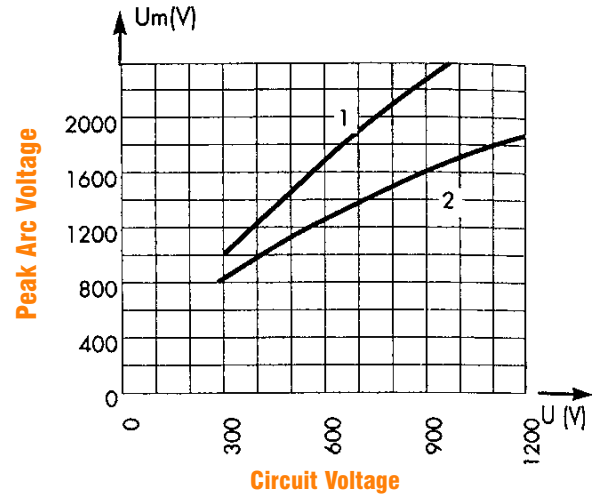
ELECTRICAL CHARACTERISTICS

DC Voltage Capabilities vs. Time Constant

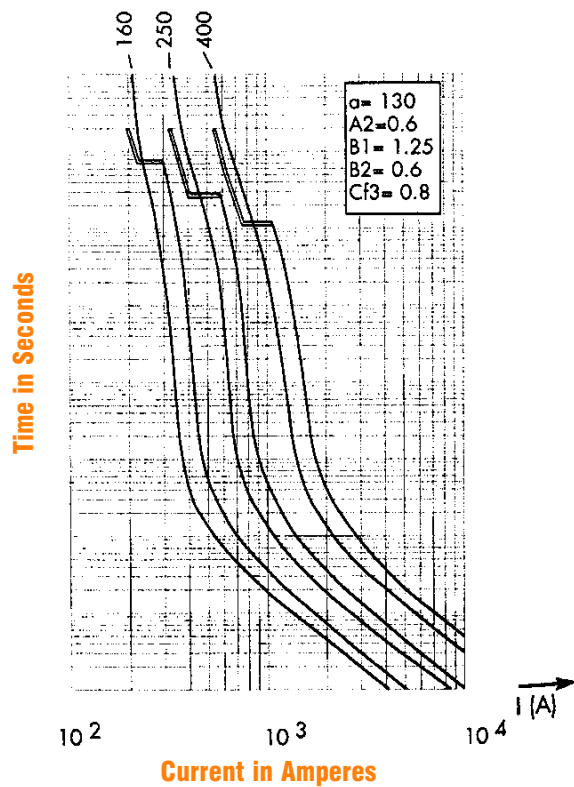
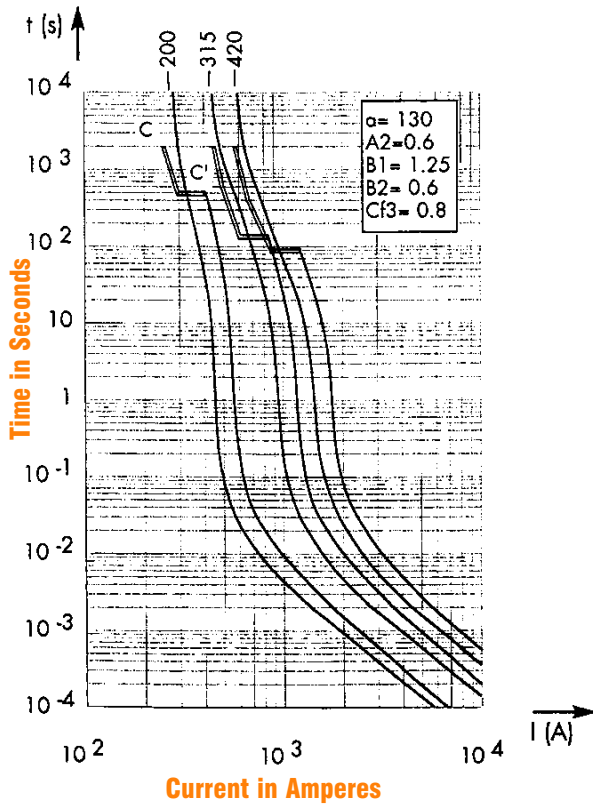


Above: Curve indicates maximum permissible value of time constant L/R as a function of DC working voltage

Peak Arc Voltage vs. Working Voltage



Melting Time vs. Current Data



Above: Curves indicate, for each rated current, pre-arcing (melting) time vs. R.M.S. pre-arcing (melting) current.